

COPPER + LWL RAW CABLES

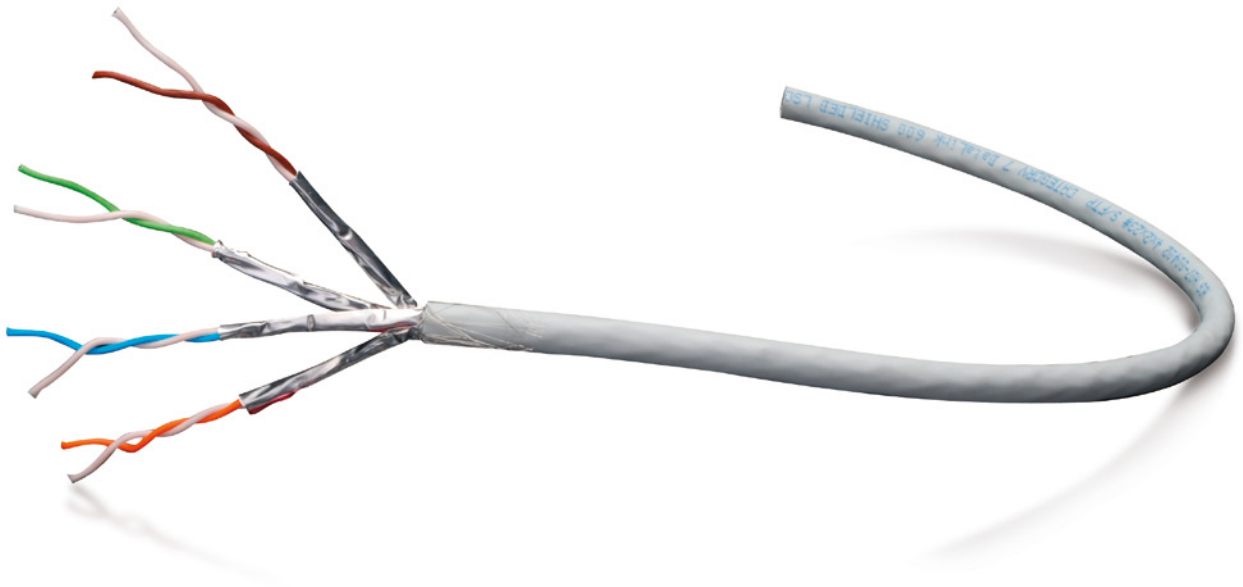


The Netherlands: +31 (0)23 - 531 91 84
info1@m-h.biz

Belgium: +32 (0)3 - 660 13 20
info2@m-h.biz

Germany: +49 (0)6192 - 97 91 85
info3@m-h.biz

www.m-hgroup.com
www.quintis.com

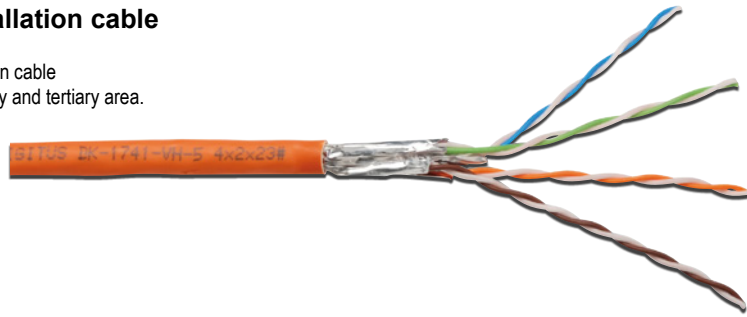


Twisted Pair Cables	112
TV/SAT Cables	116
Fiber Optic Raw Cables	120

Twisted Pair Cable

DIGITUS® CAT 7 twisted pair installation cable

4x2xAWG23 S-FTP CAT 7 1000 MHz LSZH installation cable
 Suitable for building structured cabling in the secondary and tertiary area.
 For installation of cable lines of class F, 1000 MHz.
 Conforming to ISO/IEC 11801, DIN EN 50173,
 DIN EN 50288-4-1



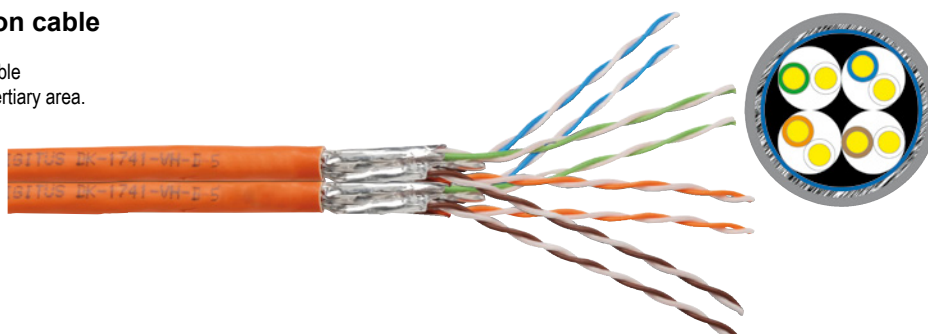
Physical Description																
Basic Conductor	Solid 23AWG, bare annealed copper (0.57mm nom.)															
Insulation	SFS-PO.															
Total number of insulated conductors	8, twisted in 4 pairs.															
Color code	Blue x White, Orange x White, Green x White, Brown x White.															
Individual pair shield	Aluminum foil, providing 100% coverage, foil face out.															
Overall shield	Tin-coated copper wire braid, 35% nom. coverage.															
Drain wire	None.															
Outer jacket	Low-smoke, Zero-halogen, Flame-retardant compound for indoor use.															
Outer jacket thickness	0.6 mm nom.															
Color	Orange RAL 2000.															
Overall Diameter	7.5 mm nom.															
Surface Marking	DIGITUS® DK-1741-VH-5 4x2x23# S/FTP CATEGORY 7 SHIELDED LSOH CABLE VERIFIED to CAT 7 ISO/IEC-11801 & IEC 61156-5 FR IEC 60332-1 CE 2002/95/EC (RoHS) [Meter Mark] METER [Batch Number]															
Mechanical Properties																
Bend Radius	Dynamic: 8xD mm min. Static: 4xD mm min															
Storage Temperature	-20 to +75C															
Temperature installation range	0 to +50C															
Temperature operating range	-20 to +60C															
Flame Tests	IEC 60332-1 (Fire), IEC 60754 (gas) & IEC 61034 (smoke)															
Pulling force	150 N max.															
Caloric value	650 KJ/m															
Total Weight	68 Kg/Km nom.															
Electrical Properties @ 20C																
Mean Impedance	100±5 Ohm @ 1-600 MHz															
Vp	75-77% nom.															
Capacitance	40 pF/m nom @ 1 KHz															
Capacitance unbalance to ground	1.6 pF/m max. @ 1 KHz															
Insulation Resistance	0.5 GOhm • Km min.															
DC Resistance	72 Ohm/Km max. (2% max. resistance unbalance).															
DC Loop Resistance	147 Ohm/Km max. (2% max. resistance unbalance).															
Voltage rating	72Vdc max.															
Coupling attenuation	85dB min @ 30-100 MHz. 85-20Log(f/100) dB min. @ 100-1000 MHz.															
PS-ANEXT Loss	92.5-15Log(f) dB min. @ 1-600 MHz (67dB max).															
PS-AACRF	78.2-20Log(f) dB min. @ 1-600 MHz (67dB max.)															
Phase delay	534+36/f ^{1/2} nS/100m max. @ f=1-1000 MHz.															
Delay Skew	25 nS/100m max.															
Transmission Properties @ 20C																
FREQ.	Insertion Loss		NEXT		PS NEXT		EL FEXT		PS EL FEXT		RL		TCL		EL-TCTL	
MHz	dB/100m		dB		dB		dB/100m		dB/100m		dB		dB		dB	
	Typ		Typ	Typ	Typ	Typ	Typ	Typ	Min	Typ	Min	Typ	Min	Typ	Min	Typ
10.00	5.5		98.0		95.0		95.0		91.6		26.0		40		15	
20.00	7,9		98.0		95.0		98.0		88.6		26.0		36		7.0	
62.50	14.5		98.0		95.0		86.0		82.6		26.0		32		NS	
100.00	18,5		98.0		95.0		82.0		78.6		24.0		30		NS	
200.00	29,6		88.0		85.0		70.0		66.6		22.0		27		NS	
300.00	32,8		87.0		84.0		67.0		63.6		21.0		NS		NS	
600.00	47,6		86.0		83.0		52.0		48.6		19.0		NS		NS	
900.00	60,4	55	80.0	86	77.0	84	48.0		44.6		18.0		NS		NS	
1000.00	64,8	59	78.0	83	75.0	81	47.0		44.6		18.0		NS		NS	

241324 / DK-1741-VH-5

247449 / DK-1741-VH-1

DIGITUS® CAT 7 twisted pair installation cable

2x 4x2xAWG23 S-FTP CAT 7 1000 MHz LSZH installation cable
 Suitable for building structured cabling in the secondary and tertiary area.
 For installation of cable lines of class F, 1000 MHz.
 Conforming to ISO/IEC 11801, DIN EN 50173,
 DIN EN 50288-4-1



Physical Description	
Basic Conductor	Solid 23AWG, bare annealed copper (0.57mm nom.)
Insulation	SFS-PO.
Total number of insulated conductors	28, twisted in 4 pairs.
Color code	Blue x White, Orange x White, Green x White, Brown x White.
Individual pair shield	Aluminum foil, providing 100% coverage, foil face out.
Overall shield	Tin-coated copper wire braid, 35% nom. coverage.
Drain wire	None.
Outer jacket	Low-smoke, Zero-halogen, Flame-retardant compound for indoor use.
Outer jacket thickness	0.6 mm nom.
Color	Orange RAL 2000.
Overall Diameter	16x7.5 mm nom.
Surface Marking	DIGITUS® DK-1741-VH-5 4x2x23# S/FTP CATEGORY 7 SHIELDED LSZH CABLE VERIFIED to CAT 7 ISO/IEC-11801 & IEC 61156-5 FR IEC 60332-1 CE 2002/95/EC (RoHS) [Meter Mark] METER [Batch Number]

Mechanical Properties	
Bend Radius	Dynamic: 8xD mm min. Static: 4xD mm min
Storage Temperature	-20 to +75C
Temperature installation range	0 to +50C
Temperature operating range	-20 to +60C
Flame Tests	IEC 60332-1 (Fire), IEC 60754 (gas) & IEC 61034 (smoke)
Pulling force	150 N max.
Caloric value	650 KJ/m
Total Weight	136 Kg/Km nom.

Electrical Properties @ 20C	
Mean Impedance	100±5 Ohm @ 1-600 MHz
Vp	75-77% nom.
Capacitance	40 pF/m nom @ 1 KHz
Capacitance unbalance to ground	1.6 pF/m max. @ 1 KHz
Insulation Resistance	0.5 GOhm • Km min.
DC Resistance	72 Ohm/Km max. (2% max. resistance unbalance).
DC Loop Resistance	147 Ohm/Km max. (2% max. resistance unbalance).
Voltage rating	72Vdc max.
Coupling attenuation	85dB min @ 30-100 MHz. 85-20Log(f/100) dB min. @ 100-1000 MHz.
PS-ANEXT Loss	92.5-15Log(f) dB min. @ 1-600 MHz (67dB max).
PS-AACRF	78.2-20Log(f) dB min. @ 1-600 MHz (67dB max.)
Phase delay	534+36/f ² nS/100m max. @ f=1-1000 MHz.
Delay Skew	25 nS/100m max.

Transmission Properties @ 20C																
FREQ. MHz	Insertion Loss		NEXT		PS NEXT		EL FEXT		PS EL FEXT		RL		TCL		EL-TCTL	
	dB/100m		dB		dB		dB/100m		dB/100m		dB		dB		dB	
	Typ		Typ	Typ	Typ	Typ	Typ	Min	Typ	Min	Typ	Min	Typ	Min	Typ	
10.00	5.5		98.0		95.0		95.0		91.6		26.0		40		15	
20.00	7,9		98.0		95.0		98.0		88.6		26.0		36		7.0	
62.50	14.5		98.0		95.0		86.0		82.6		26.0		32		NS	
100.00	18,5		98.0		95.0		82.0		78.6		24.0		30		NS	
200.00	29,6		88.0		85.0		70.0		66.6		22.0		27		NS	
300.00	32,8		87.0		84.0		67.0		63.6		21.0		NS		NS	
600.00	47,6		86.0		83.0		52.0		48.6		19.0		NS		NS	
900.00	60,4	55	80.0	86	77.0	84	48.0		44.6		18.0		NS		NS	
1000.00	64,8	59	78.0	83	75.0	81	47.0		44.6		18.0		NS		NS	

247289 / DK-1741-VH-D-5

CABLES

Computer

Power

Audio

Video

Telephone

TV/SAT

Raw Cables

Connectors + Adapters

Wall Plates

Accessories + Test devices

Twisted Pair Cable

CABLES

DIGITUS® CAT 6 twisted pair installation cable

4x2xAWG23 F-UTP CAT 6 250 MHz LSZH installation cable

Suitable for building structured cabling in the secondary and tertiary area.
For installation of cable lines of class E, 250 MHz.
Conforming to ISO/IEC 11801, DIN EN 50173, DIN EN 50288-5-1

Physical description

- Basic Conductor: solid AWG 23/1
- Insulation: PE
- Total number of insulated conductors: 8, twisted in 4 pairs
- Color code: blue-white, orange-white, green-white, brown-white
- Individual pair shield: none
- Overall shield: aluminium foil
- Outer jacket: halogenfree (LSZH)
- Color: orange

Electrical properties

- Mean impedance: 100 ± 5 Ohm @ 1-250 MHz
- Vp: 65% nom.
- Delay skew: 20 nS/100m max.



Computer

Power

	Installation cable
100m Rolle	DK-1621-VH-1 256205
500m Trommel	DK-1621-VH-5 251682

Audio

DIGITUS® CAT 6 U-UTP twisted pair installation cable

4x2xAWG23 U-UTP CAT 6 250 MHz installation cable

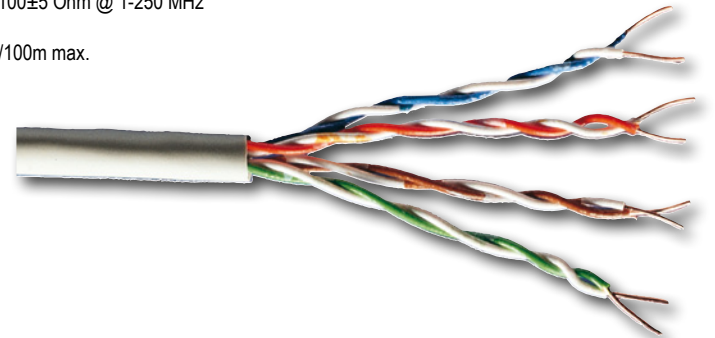
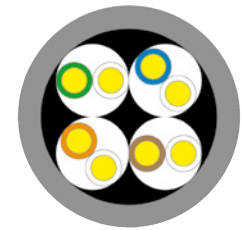
Suitable for building structured cabling in the secondary and tertiary area.
For installation of cable lines of class E, 250 MHz.
Conforming to ISO/IEC 11801, DIN EN 50173, DIN EN 50288-5-1

Physical description

- Basic Conductor: solid AWG 23/1
- Insulation: PE
- Total number of insulated conductors: 8, twisted in 4 pairs
- Color code: blue-white, orange-white, green-white, brown-white
- Individual pair shield: none
- Overall shield: none
- Outer jacket: PVC
- Color: grey

Electrical properties

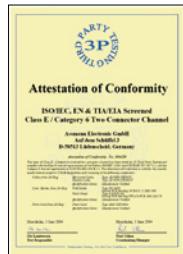
- Mean impedance: 100 ± 5 Ohm @ 1-250 MHz
- Vp: 65% nom.
- Delay skew: 20 nS/100m max.



Video

Telephone

	Installation cable
100m Rolle	DK-1611-V-1 241225
305m Rolle	DK-1611-V-305 241232



TV/SAT

Raw Cables

DIGITUS® CAT 5e SF-UTP LSOH twisted pair installation cable

4x2xAWG24 SF-UTP CAT 5e 100 MHz LSZH installation cable

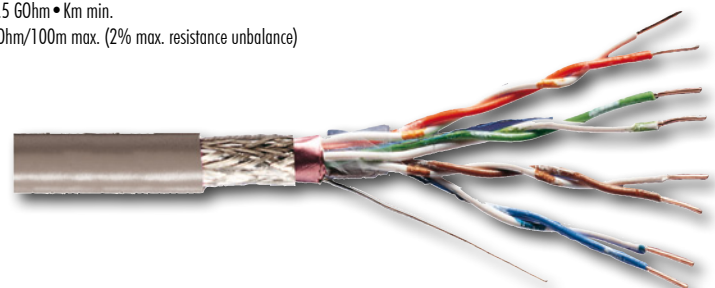
Suitable for building structured cabling in the secondary and tertiary area.
For installation of cable lines of class E, 100 MHz.
Conforming to ISO/IEC 11801, DIN EN 50173, DIN EN 50288-2-1

Physical description

- Basic Conductor: solid AWG 24/1
- Insulation: PE
- Total number of insulated conductors: 8, twisted in 4 pairs
- Color code: blue-white, orange-white, green-white, brown-white
- Individual pair shield: none
- Overall shield: aluminium foil and tin-coated copper wire braid
- Outer jacket: halogenfree (LSZH)
- Color: grey

Electrical properties

- Mean impedance: 100 ± 5 Ohm @ 1-250 MHz
- Capacitance unbalance to ground: 1600pF/100m min.
- Insulation resistance: 0.5 GOhm • Km min.
- DC loop resistance: 19 Ohm/100m max. (2% max. resistance unbalance)



Connectors + Adapters

Wall Plates

Accessories + Testdevices

	Installation cable
100m Drum	DK-1531-VH-1 241201
500m Drum	DK-1531-VH-5 241218

DIGITUS® CAT 5e twisted pair installation cable

4x2xAWG24 SF-UTP CAT 5e 100 MHz installation cable

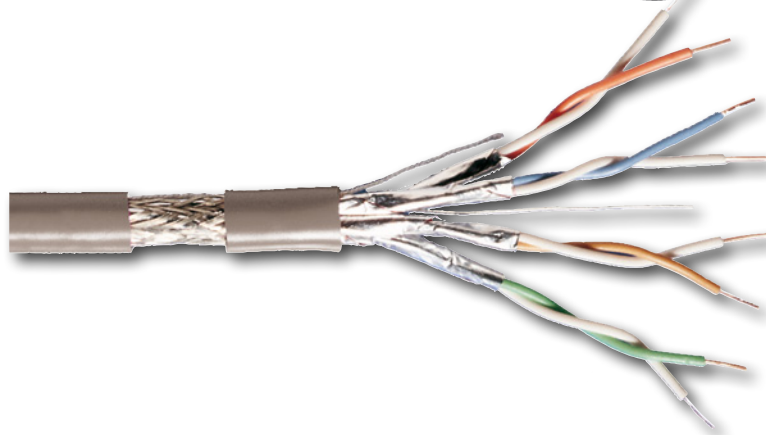
Suitable for building structured cabling in the secondary and tertiary area.
For installation of cable lines of class E, 100 MHz.
Conforming to ISO/IEC 11801, DIN EN 50173, DIN EN 50288-2-1

Physical description

- Basic Conductor: solid AWG 24/1
- Insulation: PE
- Total number of insulated conductors: 8, twisted in 4 pairs
- Color code: blue-white, orange-white, green-white, brown-white
- Individual pair shield: none
- Overall shield: aluminium foil and tin-coated copper wire braid
- Outer jacket: PVC
- Color: grey

Electrical properties

- Mean impedance: $100 \pm 5 \text{ Ohm @ } 1\text{-}250 \text{ MHz}$
- Capacitance unbalance to ground: $1600 \text{ pF}/100 \text{ m min.}$
- Insulation resistance: $0.5 \text{ GOhm} \cdot \text{Km min.}$
- DC loop resistance: $19 \text{ Ohm}/100 \text{ m max. (2\% max. resistance unbalance)}$



	Installation cable
100m Rolle	DK-1531-V-1 241157
305m Rolle	DK-1531-V-305 241164

DIGITUS® CAT 5e F-UTP twisted pair installation cable

4x2xAWG24 F-UTP CAT 5e 100 MHz installation cable

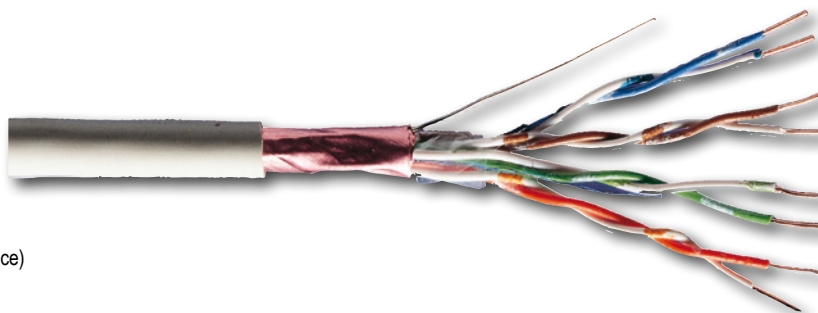
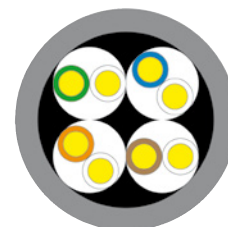
Suitable for building structured cabling in the secondary and tertiary area.
For installation of cable lines of class D, 100 MHz.
Conforming to ISO/IEC 11801, DIN EN 50173, DIN EN 50288-2-1

Physical description

- Basic Conductor: solid AWG 24/1
- Insulation: PE
- Total number of insulated conductors: 8, twisted in 4 pairs
- Color code: blue-white, orange-white, green-white, brown-white
- Individual pair shield: none
- Overall shield: aluminium foil
- Outer jacket: PVC
- Color: grey

Electrical properties

- Mean impedance: $100 \pm 5 \text{ Ohm @ } 1\text{-}250 \text{ MHz}$
- Capacitance unbalance to ground: $1600 \text{ pF}/100 \text{ m min.}$
- Insulation resistance: $0.5 \text{ GOhm} \cdot \text{Km min.}$
- DC loop resistance: $19 \text{ Ohm}/100 \text{ m max. (2\% max. resistance unbalance)}$



	Installationskabel
100m Rolle	DK-1521-V-1 241119
305m Rolle	DK-1521-V-305 241126

CABLES

Computer

Power

Audio

Video

Telephone

TV/SAT

Raw Cables

Connectors + Adapters

Wall Plates

Accessories + Test devices

Twisted Pair Cable

CABLES

DIGITUS® CAT 5e twisted pair installation cable

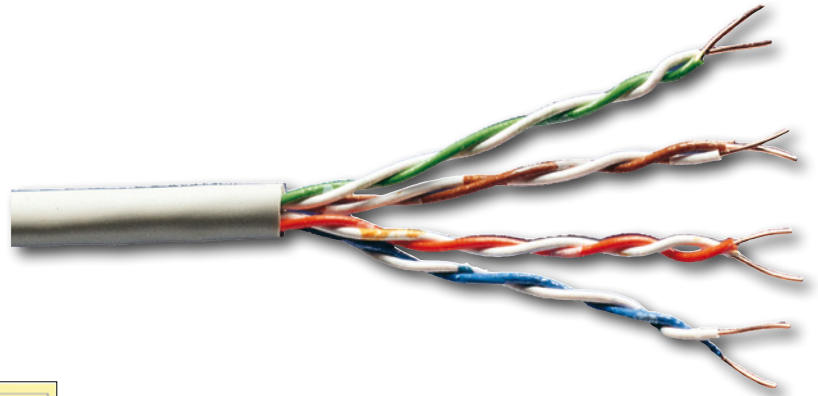
4x2xAWG24 U-UTP CAT 5e 100 MHz installation cable

Physical description

- Basic Conductor: solid AWG 24/1
- Insulation: PE
- Total number of insulated conductors: 8, twisted in 4 pairs
- Color code: blue-white, orange-white, green-white, brown-white
- Individual pair shield: none
- Overall shield: none
- Outer jacket: PVC
- Color: grey

Electrical properties

- Mean impedance: 100±15 Ohm @ 1-250 MHz
- Capacitance unbalance: max. 300pF/100m @ 20°C
- Insulation resistance: 50 GOhm·Km min.
- DC loop resistance: 125 Ohm/100m max.
- Mutual capacitance: 5600pF/100m max.



Computer

Power

Audio

Video

Telephone

TV/SAT

Raw Cables

Connectors + Adapters

Wall Plates

Accessories + Testdevices

	Installationskabel
100m Rolle	DK-1511-V-1 241072
305m Rolle	DK-1511-V-305 241126



DIGITUS® CAT 6 twisted pair patch cable

4x2xAWG26 S-FTP CAT 6 250 MHz patch cable

Suitable for direct assembly of RJ45 plugs for the manufacture of patch cables.
For installation of cable lines of class E, 250 MHz.
Conforming to ISO/IEC 11801, DIN EN 50173, DIN EN 50288-5-1

Physical description

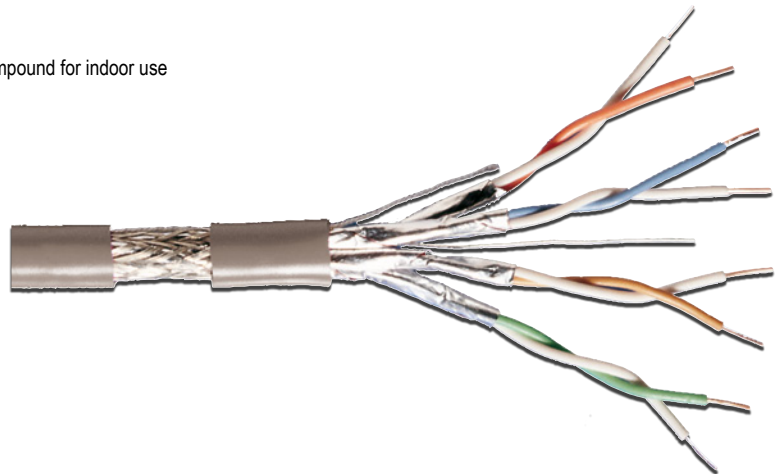
- Basic Conductor: stranded AWG 26/7,
- Total number of insulated conductors: 8, twisted in 4 pairs
- Color code: blue x white, orange x white, green x white, brown x white
- Individual pair shield: Aluminium foil, providing 100% coverage
- Overall shield: tin-coated copper wire braid
- Outer jacket: low-smoke, zero-halogen, flame retardant, non corrosive compound for indoor use
- Color: grey

Mechanical property

- Flame test: IEC 60332-1 (fire)

Electrical properties

- Mean impedance: 100±6 Ohm @ 1-250 MHz
- Vp: 67% nom.
- Mutual capacitance: 55,8 nF/km max.
- Capacitance unbalance: 1.6 pF/m max.
- Insulation resistance: 0.5 GOhm * Km min.
- DC loop resistance: 450 Ohm/Km max. (2% max. resistance unbalance)
- Phase delay: 5350 nS/km max.
- Delay skew: 40 nS/100m max.



	Patch cable
100m Paper box	DK-1641-PH-1 131786
305m Paper box	DK-1641-PH-305 131793

DIGITUS® CAT 6 twisted pair patch cable

4x2xAWG24 U-UTP CAT 6 250 MHz patch cable

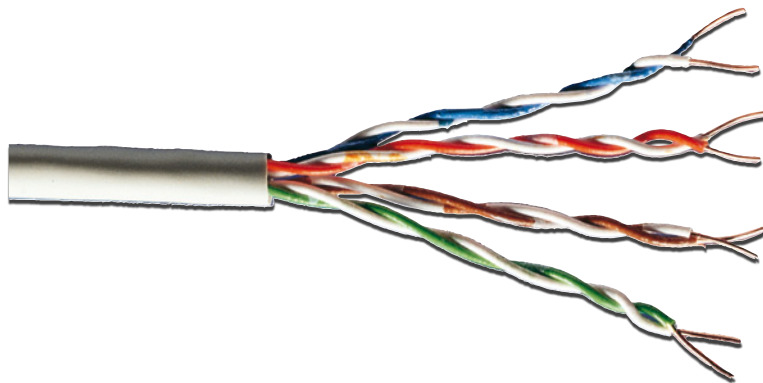
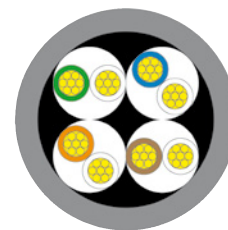
Suitable for direct assembly of RJ45 plugs for the manufacture of patch cables.
For installation of cable lines of class E , 250 MHz.
Conforming to ISO/IEC 11801, DIN EN 50173, DIN EN 50288-6-2

Physical description

- Basic Conductor: stranded AWG 24/7,
- Total number of insulated conductors: 8, twisted in 4 pairs
- Color code: blue x white, orange x white, green x white, brown x white
- Individual pair shield: none
- Overall shield: none
- Outer jacket: PVC
- Color: grey

Electrical properties

- Mean impedance: 100±6 Ohm @ 1-250 MHz
- Vp: 67% nom.
- Mutual capacitance: 55,8 nF/km max.
- Capacitance unbalance: 1.6 pF/m max.
- Insulation resistance: 0.5 GOhm * Km min.
- DC loop resistance: 450 Ohm/Km max. (2% max. resistance unbalance)
- Phase delay: 5350 nS/km max.
- Delay skew: 40 nS/100m max.



	Patch cable
100m Paper box	DK-1611-P-1 131755
305m Paper box	DK-1611-P-305 131762

DIGITUS® CAT 5e twisted pair patch cable

4x2xAWG26 SF-UTP CAT 5e 100 MHz patch cable

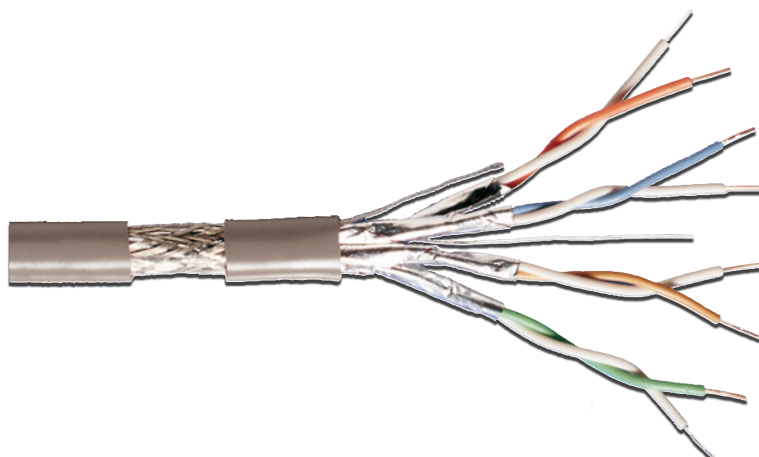
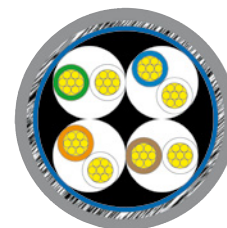
Suitable for direct assembly of RJ45 plugs for the manufacture of patch cables.
For installation of cable lines of class D , 100 MHz.
Conforming to ISO/IEC 11801, DIN EN 50173, DIN EN 50288-2-2

Physical description

- Basic Conductor: stranded AWG 26/7
- Total number of insulated conductors: 8, twisted in 4 pairs
- Color code: blue-white, orange-white, green-white, brown-white
- Individual pair shield: none
- Overall shield: aluminium foil and tin-coated copper wire braid
- Outer jacket: PVC
- Color: grey

Electrical properties

- Mean impedance: 100±10 Ohm @ 10-100 MHz
- Vp: 66% nom.
- Mutual capacitance: 55,8 nF/km max.
- Capacitance unbalance: 1.6 pF/m max.
- Insulation resistance: 0.5 GOhm * Km min.
- DC loop resistance: 450 Ohm/Km max. (2% max. resistance unbalance)
- Phase delay: 5350 nS/km max.
- Delay skew: 40 nS/100m max.



	Patch cable
100m Paper box	DK-1531-P-1 202288
305m Paper box	DK-1531-P-305 202295

CABLES

Computer

Power

Audio

Video

Telephone

TV/SAT

Raw Cables

Connectors + Adapters

Wall Plates

Accessories + Test devices

Twisted Pair Cable

CABLES

DIGITUS® CAT 5e twisted pair patch cable

4x2xAWG26 F-UTP CAT 5e 100 MHz patch cable

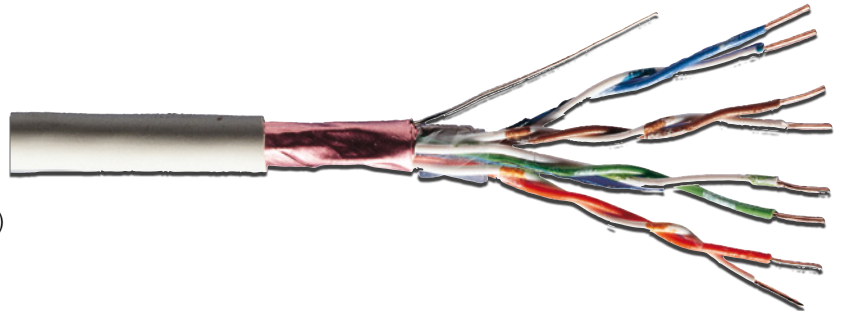
Suitable for direct assembly of RJ45 plugs for the manufacture of patch cables.
For installation of cable lines of class D , 100 MHz.
Conforming to ISO/IEC 11801, DIN EN 50173, DIN EN 50288-2-2

Physical description

- Basic Conductor: stranded AWG 26/7
- Total number of insulated conductors: 8, twisted in 4 pairs
- Color code: blue-white, orange-white, green-white, brown-white
- Individual pair shield: none
- Overall shield: aluminium foil
- Outer jacket: PVC
- Color: grey

Electrical properties

- Mean impedance: 100±10 Ohm @ 10-100 MHz
- Vp: 66% nom.
- Mutual capacitance: 55,8 nF/km max.
- Capacitance unbalance: 1.6 pF/m max.
- Insulation resistance: 0.5 GOhm * Km min.
- DC loop resistance: 450 Ohm/Km max. (2% max. resistance unbalance)
- Phase delay: 5350 nS/km max.
- Delay skew: 40 nS/100m max.



Computer

Power

Audio

Video

	Patch cable
100m Paper box	DK-1521-P-1 241133
305m Paper box	DK-1521-P-305 202271

DIGITUS® CAT 5e twisted pair patch cable

4x2xAWG24 U-UTP CAT 5e 100 MHz patch cable

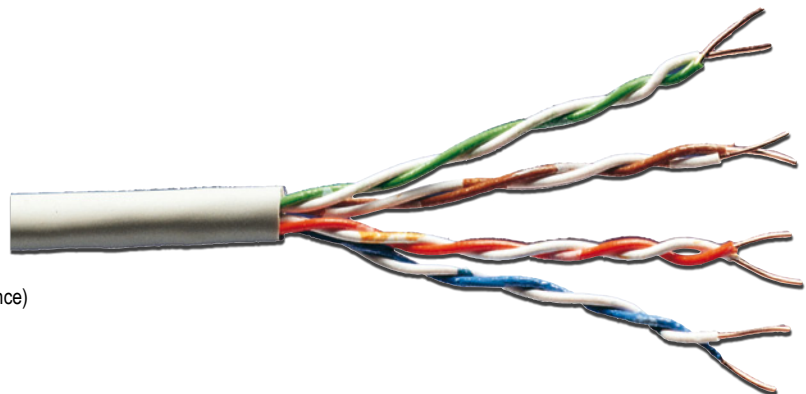
Suitable for direct assembly of RJ45 plugs for the manufacture of patch cables.
For installation of cable lines of class D , 100 MHz.
Conforming to ISO/IEC 11801, DIN EN 50173, DIN EN 50288-3-2

Physical description

- Basic Conductor: stranded AWG 24/7
- Total number of insulated conductors: 8, twisted in 4 pairs
- Color code: blue-white, orange-white, green-white, brown-white
- Individual pair shield: none
- Overall shield: none
- Outer jacket: PVC
- Color: grey

Electrical properties

- Mean impedance: 100±10 Ohm @ 10-100 MHz
- Vp: 66% nom.
- Mutual capacitance: 55,8 nF/km max.
- Capacitance unbalance: 1.6 pF/m max.
- Insulation resistance: 0.5 GOhm * Km min.
- DC loop resistance: 450 Ohm/Km max. (2% max. resistance unbalance)
- Phase delay: 5350 nS/km max.
- Delay skew: 40 nS/100m max.



Telephone

TV/SAT

Raw Cables

Connectors + Adapters

Wall Plates

Accessories + Testdevices

	Patch cable
100m Paper box	DK-1511-P-1 202233
305m Paper box	DK-1511-P-305 202257

Modular flat cable

- Modular cable unshielded, AWG 26
- Flat cable with 4, 6 or 8 wires (D-shape)
- 100m per reel
- Color: black with colour coded wires
- Other length per reel, versions and colours on request



066767 / AT-K 1801 100M	4-wires
186472 / AT-K 1802 100M-1	6-wires
066781 / AT-K 1803 100M	8-wires

TV coaxial raw cable, 75 Ohm

Attenuation at 20°C in dB/100m (in average):

100 MHz - 7,0 dB	1000 MHz - 25,0 dB
200 MHz - 10,6 dB	1350 MHz - 30,8 dB
300 MHz - 12,3 dB	1750 MHz - 34,5 dB
500 MHz - 16,5 dB	2050 MHz - 38,5 dB
800 MHz - 22,2 dB	

- Jacket material: PVC
- Jacket diameter: 6,6mm
- Inner conductor: CU 0,7mm
- Insulation: PE 4,4mm
- 1st shielding: AL foil double-lined
- 2nd shielding: braid 48x 0.12mm
- Shielding attenuation: 80dB
- Ring packed
- Color: white

141853 / AK-TV066-025-S	25,0 m
141877 / AK-TV066-100-S	100,0 m

SAT coaxial raw cable 75 Ohm

Attenuation at 20 °C in dB/100m (in average):

100 MHz - 5,9 dB	1000 MHz - 19,8 dB
200 MHz - 7,9 dB	1350 MHz - 23,9 dB
300 MHz - 10,0 dB	1750 MHz - 26,9 dB
500 MHz - 13,6 dB	2050 MHz - 30,8 dB
800 MHz - 17,4 dB	

- Jacket material: PVC
- Jacket diameter: 6,8mm
- Inner conductor: CU 1,1mm
- Insulation: Cell PE 5,0mm
- 1st shielding: AL foil double-lined
- 2nd shielding: braid 64x 0.12mm
- Shielding attenuation: 85dB
- Ring packed
- Color: white

141709 / AK-SAT068-025-S	25,0 m
141716 / AK-SAT068-050-S	50,0 m
141723 / AK-SAT068-100-S	100,0 m



Computer

Power

Audio

Video

Telephone

TV/SAT

Raw Cables

Connectors +
Adapters

Wall Plates

Accessories +
Test devices



Loudspeaker installation cable, transparent

Cable cross section:
AK-AV 400 = 1.5qmm
AK-AV 401 = 2.5qmm

- 2-wire cable, CU, unshielded, PVC jacket
- length: 100m on spool
- Color: transparent

110217 / AK-AV 400

110767 / AK-AV 401

Computer

Power

Audio

Video

Telephone

TV/SAT

Raw Cables

Connectors + Adapters

Wall Plates

Accessories + Testdevices



Fibre-optic Universal Indoor, Outdoor CableU-DQ(ZN)BH 50/125 µm, OM 2

- Universally useable, for indoor and outdoor use.
- Halogen-free, flame-resistant as per IEC 332-3 C, longitudinally and laterally water-resistant.
- The cable can be delivered in additional lengths and in fabricated form.

005070 / AL-5AN4-100 Universal Indoor-Outdoor Cable 4G50/125 µm, 100m



Fibre-optic Universal Indoor, Outdoor CableU-DQ(ZN)BH 50/125 µm, OM 2

- Universally useable, for indoor and outdoor use.
- Halogen-free, flame-resistant as per IEC 332-3 C, longitudinally and laterally water-resistant.
- The cable can be delivered in additional lengths and in fabricated form.

005063 / AL-5AN12-100 Universal indoor-outdoor cable 12G50/125 µm, 100m

005070 / AL-5AN4-100 Universal Indoor-Outdoor Cable 4G50/125 µm, 100m



Fibre-optic Universal Indoor, Outdoor CableU-DQ(ZN)BH 50/125 µm, OM 2

- Universally useable, for indoor and outdoor use.
- Halogen-free, flame-resistant as per IEC 332-3 C, longitudinally and laterally water-resistant.
- The cable can be delivered in additional lengths and in fabricated form.

005087 / AL-5AN8-100 Universal indoor-outdoor cable 8G50/125 µm, 100m

005070 / AL-5AN4-100 Universal Indoor-Outdoor Cable 4G50/125 µm, 100m