

Bradysoft 8.5™

Advanced label design and integration software



With BRADYSOFT 8.5™ barcode label design software, you can easily integrate barcode label printing into your business environment, dramatically enhancing both efficiency and control. Whether your goal is managing assets and resources, controlling distribution channels and stock levels, tracking documents, or managing data records, BRADYSOFT 8.5 barcode label design software provides a powerful solution for your organisation's most advanced labelling projects.

What is new in Bradysoft 8.5™?

- **Platform Compatibility:**
 - Windows Vista
 - Windows 2000
 - Windows XP
 - Windows 2003 Server
 - Network or Terminal server
- **Enhanced menu look and feel:** There are now two themes available for the menu look and feel
- **Enhanced Open dialog box:** The enhanced Open dialog box provides the left toolbar icons with direct access to some pre-defined folders. Users can also open Access, Excel or dBase files directly from the dialog box
- **Text on any angle:** You can use the TextArt feature in conjunction with the Polyline option (Shape Settings Tab) to select a shape and add text on any angle for that shape
- **Label Background definition:** It is now possible to select a label background without having to use a name based on the stock type name. A new 'Background Box' allows you to select the file to be used as the label background
- **GS1 Norm barcode verification:** The new GS1 Norm option (Tools > Options > Others tab) enables barcode verifications according to GS1 (formerly UCC-EAN) recommendations. When the option is enabled, it will verify that all barcodes conform to the different requirements of the GS1 normalisation, such as: narrow bar size, check digit, human readable, etc.
- **RFID button:** A new RFID toolbar button provides a direct link to the Bradysoft™ RFID settings
- **Print by printer resolution:** Uses an algorithm to send only the positions and sizes linked to a Windows printer resolution independent of the paper format. This allows objects to be adjusted at print time so that everything fits on the page/label
- **Enhanced Database Manager interface:** The user interface of the Database Manager has been improved to be more intuitive and easy to use:
 - You can now directly open a basic database file (Access, Excel, dBase).
 - Duplicate records using a single right-click on selected records.
 - Improved error messaging (limited user rights, not compliant with database structure, etc.)
 - Database Manager Features can now be limited on a per workstation basis.
 - You can now customise the display font.

Quick Specs

Advanced label design and integration software
BRADYSOFT™ is the best choice for label printing in an enterprise environment
Print and Program RFID labels simultaneously
UNICODE – For enhanced multilingual support
Bi-directional support for over 1750 printers

Add-ons

Form Designer and Form Viewer – design tools for building custom applications
POF Manager – generates intelligent native printer code to a Printer Object File based on BRADYSOFT™ label design
Command File Interpreter (CFI) – automatically prints labels based on a "Command File Interpreter" sent from another application

RFID Module BRADYSOFT 8.5™ supports the following RFID tags:

Alien - EPC Class 1 (64 bits)	ISO 18000 Ucode 1,19
Alien - EPC Class 1 (96 bits)	ISO 18000-6B Ucode EPC 1,19
C1V1 (64bits)	ISO 18000-6B Ucode HSL
C1V1 (96bits)	Matrics - Class 0+
EM Marin	Matrics - EPC Class 0
EPC - Philips HF (96 bits)	Matrics - EPC Class 0+(64 bits)
EPC 1,19	Philips I-CODE
EPC C1V1(96bits)	Philips loode 1
EPC Class 0 (64 & 96 bit)	Philips loode SLI
EPC Class 0+ (64 & 96 bit)	Phillips 1.19 and future Gen 2
EPC Class 1 (64 & 96 bit)	Phillips ISO 15693
EPC class 1 Gen2 (96bits)	Texas Instrument ISO 15693
EPC Class-1 (Alien)	Texas Instrument Tag IT
EPC Gen2	TI ISO 15693
EPC Philips HF (96bits)	TI Tag-It
ICode SLI ISO 15693	UCode EPC 1.19-256 bits
Infineon - ISO 15693	Ucode HSL
Infineon My-d	UCode HSL (ISO 18000-6B)
Inside Tech Picotag	UCode ISO 18000

BRADYSOFT 8.5™ Features matrix		Basic	Standard	Ultimate
General	Print-only version			■
	Network version			■
	UNICODE	■	■	■
	Import from FTP			■
	Printer code converter		■	■
	Multi-level undo	1	40	40
	Auto Save document		■	■
	Password (one level)		■	■
	Lock/Unlock objects			■
	Preview graphics/labels	■	■	■
	Export label as a graphic			■
	RF Tag management			■
	Hidden (unprintable) objects		■	■
	Colour graphic reduction	■	■	■
	Graphic bar codes	9	All	All
	Native printer bar codes	■	■	■
	Circular bar codes			■
	TextArt	■	■	■
	RTF			■
	Listfield			■
	Object positioning	■	■	■
	OLE object	■	■	■
	Fit to frame option			■
Words hyphenation option		■	■	
Full justify		■	■	
Multilingual support	■	■	■	
Tools	User Manager			■
	Job Modifier			■
	Printing Logfile			■
	UCC/EAN 128 wizard, MaxiCode wizard		■	■
	Fonts downloader	■	■	■
	COMet		■	■
Add-Ons	Command File Interpreter (CFI)			■
	POF Configuration Manager			■
	Form Designer			■
	Form Viewer			■
Programmability	ActiveX Basic		■	■
	ActiveX version 2/ActiveX version 1			■
Database Management	Database Manager - Standard options	■	■	■
	Database Manager - Batch printing options		■	■
	ASCII database/ODBC/OLE DB		■	■
	Multiple tables			■
	Filters on tables		■	■
	SQL mode			■
	Create/edit/query		■	■
	Save query			■
	Grid view/print		■	■
Datasource Management	Flexible date stamping	■	■	■
	Flexible time stamping	■	■	■
	Propose values/PickList		■	■
	Variable graphic images		■	■
	Shared variables		■	■
	Value from a file		■	■
	Output mask		■	■
	Counting bases	Dec	Dec/Alph	All
	Linked counters			■
	Accumulate value		■	■
Form Management	Add an offset to a date	■	■	■
	Customizable		■	■
	Set input format		■	■
	Minimum input length		■	■
	Automatic prompt		■	■



CODESOFT™ 9

Advanced label design & integration software

Whether you are managing assets and resources, controlling distribution channels and stock levels, tracking documents, or managing data records, CODESOFT™ 9 provides a powerful solution for your organisation's most advanced labelling projects.

What is new in CODESOFT™9

- Redesigned ergonomically for more instinctive usability
- View labels and data in the same screen
- Dynamic view of label changes
- Wizards for database connections, table lookup, formulae, bar codes, images, documents, templates and more
- SQL Query Builder
- Database connections created in 2 easy steps
- Label creation wizards create labels in half the time
- Label comparison tool for previewing labels for design validation or production
- Advanced Features: choose between .NET wrapper and Active X for custom integration
- 1 year Service Maintenance Agreement (SMA) is included with every purchase

Platform Compatibility

- Windows® 7
- Windows® 2008 Server
- Windows Vista™
- Windows® XP
- Windows® 2003 Server, Network or Terminal Server

Cross-Compatibility

- **LABEL ARCHIVE** – Full security version control and reprint for audit compliance
- **SENTINEL** – Integration with any ERP system
- **TRACKSOFT** – Food product traceability according to the 178/2002 European Regulation and printing compliant labels
- **IDEAM** – Collect data from mobile devices and print labels to any stationary or mobile printer

Range

- **CODESOFT Runtime** (print only version)
 - Single user
 - Network for 5, 10 ... users
- **CODESOFT Lite**
 - Entry-level - Includes label design features and database connectivity
 - Licensing on 1 thermal transfer printer
- **CODESOFT Pro**
 - Mid-range – Includes design features and database connectivity
 - Licensing based on 1 or 3 thermal transfer printers at a time and default Windows® printers.
- **CODESOFT Enterprise RFID**
 - High-end – all features and powerful software integration capabilities
 - Licensing based on unlimited number of printers.
 - Available in single user, Runtime and Network version

Quick Specs

Advanced label design and integration software
 CODESOFT is the best choice for label printing in an enterprise environment
 Print and Program RFID labels simultaneously
 UNICODE – For enhanced multilingual support
 Supports over 2100 printers

Add-ons

Form Designer and Form Viewer – Design tools for building custom applications
POF Manager – Generates intelligent native printer code to a Printer Object File based on CODESOFT label design
Command File Interpreter (CFI) – Automatically prints labels sent from another application



CODESOFT Features matrix

	LITE	PRO	ENTRPRISE RFID	RUNTIME RFID
GENERAL				
UNICODE	•	•	•	•
Multi-level undo	40	40	40	
Auto Save document	•	•	•	
Lock/Unlock objects			•	
Export label as a graphic			•	
Import ULD file	•	•	•	
Import from ftp			•	•
Hidden (unprintable) objects		•	•	•
Multilingual support (24 languages)	•	•	•	•
Objects order	•	•	•	
WYSIWIG label	•	•	•	•
Wizard-bases user interface (New label, GS1, HIBC, DB, more)	•	•	•	
Drag-and-drop label design	•	•	•	
Multi-tabbed label view	•	•	•	•
TOOLS				
Printing Logfile (label name, printer, user, and more)			•	•
Directly modify printer code (Job Modifier)	•	•	•	•
Define user access rights (User Manager)			•	•
Retrieve data from serial devices such as scales (COMet)			•	•
PRINTER / PRINTING				
Print-only version			•	•
THT printer	All	All	All	All
# of installed printers at a time	One	One/Three	Unlimited	Unlimited
# of driver installations	Unlimited	Unlimited	Unlimited	Unlimited
Windows® printer	None	Default	All	All
Printer code converter	•	•	•	
TCP/IP	•	•	•	•
Fonts downloader	•	•	•	•
True Type Font Substitution			•	•
Print preview	•	•	•	•
RFID / RF TAG				
RF Tags Management			•	•
TEXT OBJECTS				
Fit to frame option			•	•
Wordwrap	•	•	•	•
Words hyphenation option	•	•	•	•
Rich Text Field			•	•
TextArt	•	•	•	•
List field			•	•
OCX files			•	•
DATABASE MANAGEMENT				
Database connection wizard	•	•	•	•
Database Manager with batch printing options	•	•	•	•
OLE DB / ODBC / ASCII database connectivity	•	•	•	•
Access multiple tables simultaneously			•	•
Filters on tables	•	•	•	•
SQL mode/query builder (advanced users)			•	•
Create/edit query	•	•	•	•
Save query			•	•
Grid view / print	•	•	•	•
DATASOURCE MANAGEMENT				
Select value from custom list (Pick List)	•	•	•	•
Variable graphic images	•	•	•	•
Shared variables on multiple labels	•	•	•	•
Control the display of variable data (Output Mask)	•	•	•	•
Advanced counters (linked, shared, rollover)			•	•
Accumulate value	•	•	•	•
Combine data or multiple fields in object	•	•	•	•

LabelMark™ V3 Labelling Software

Make easy, efficient & cost-effective labels

LABELMARK™ V3 has been developed specifically for LABELLING APPLICATIONS, in the TELECOM, DATACOM, ELECTRICAL, LABORATORY and GENERAL INDUSTRIAL MARKETS.

LABELMARK™ V3 is the logical solution for LABEL DESIGN, EDITING, PRINTING to your specific requirements.



Two great programs in one package.
LABELMARK™ for simple text only labels,
and **LABELMARK™ PLUS** for more advanced
label design (barcode & graphics).



- » WYSIWYG representation of label formats.
- » Simple text entry, easy to format and edit.
- » Find & Replace feature.
- » Versatile serialisation creation from simple to advanced.
- » Automatic text repeat for quick wiremarker label creation.
- » Date/Time feature.
- » Data Import Wizard greatly simplifies importing data from spreadsheets and ASCII text files. You can also use existing ODBC and OLE DB data sources.
- » Common barcodes available (Code 3 of 9 Standard, Code 3 of 9 ASCII, Code 93, Extended Code 93, Code 128, Interleaved 2 of 5, UPC-E, UPC-A, HIBC).
- » Accommodates all Brady stock as well as custom label formats.
- » Easy creation and editing of label templates.
- » Image library of common electrical, datacom and safety symbols.
- » Available in 7 languages.
- » Compatible with these BRADY printers and all Windows based printers.



Mulder-Hardenberg B.V., The Netherlands
Tel.: +31 (0)23 - 531 91 84
info_nl@m-h.biz

Mulder-Hardenberg N.V., Belgium
Tel.: +32 (0)3 - 660 13 20
info_be@m-h.biz

Mulder-Hardenberg GmbH, Germany
Tel.: +49 (0)6192 - 97 91 85
info_de@m-h.biz

www.mulder-hardenberg.com

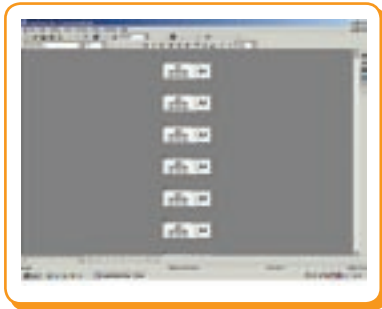
Make easy, efficient & cost-effective labels



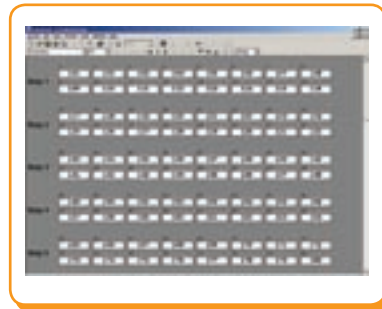
Versatile serialisation feature and automatic legend repeat for quick creation of wiremarking labels.



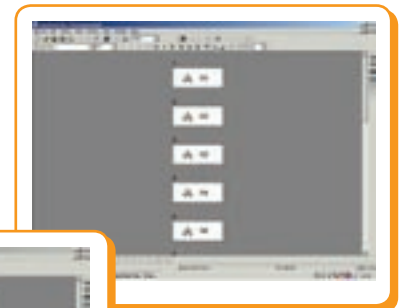
Create quick and easy your own templates by using graphics (pre-programmed or your own) logos and barcodes.



Use pre-programmed templates to simplify label setup. The time/date feature makes sure you can easily add time and date fields into labels.



Intuitive 110 Block Marking (WYSIWYG representation of Label Format).



PRIMARY APPLICATIONS

- » Wire & cable marking
- » Terminal block identification
- » Control panel and component marking
- » Asset Identification
- » 110 block marking
- » Patch panel and outlet ID
- » Conduit and voltage marking
- » Cable tray identification
- » Vial, tube, slide and well plate labelling



Use the image library to insert electrical, datacom and safety symbols.

SYSTEM REQUIREMENTS

- » Intel Pentium processor (minimum 66 MHz 486DX2)
- » Windows 98, with internet explorer 5.01
- » Windows 2000, with Service Pack 1
- » Windows NT 4 with Service Pack 6a
- » Windows XP
- » 64 MB of RAM (minimum 16 MB)
- » Hard Drive with at least 100 MB of free disk space
- » CD-ROM Drive
- » 16-bit or greater video display card
- » 800 x 600 or greater monitor resolution

LABELMARK™ V3 LABELLING SOFTWARE

ORDER REFERENCE	DESCRIPTION
LM3-EUR	LabelMark™ V3 - Europe CD



MarkWare™ 3.7.6 Facility Identification Software



MarkWare™, the companion software for use with Brady marking systems, is a powerful and effective tool for industrial sign creation. It includes over 1,000 symbols, pictograms and templates, making it quick and easy for you to create your own signs and labels. From your PC you can create messages, symbols, pictograms, informative and instructive signage effectively. Make your workplace safe!

MarkWare™ handles:

- Monochrome printing up to 5m in length (PowerMark™) on adhesive banner rolls
- Multicolour printing up to 1m in length (GlobalMark™) on adhesive banner rolls
- Letter & symbol cut-outs (GlobalMark™ Color & Cut)
- Printing + cutting on the same label (GlobalMark™ Color & Cut)
- Printing on die-cut labels (MiniMark™)
- Printing on a variety of media ranging in width from 13mm to 250mm, according to the Brady system used

Choosing MarkWare™ means choosing simplicity and effectiveness

Main MarkWare™ characteristics

- Reverse printing / Puzzle printing / Object rotation / Data import (Excel®, Access®, Dbase®, Text®, FoxPro®, Lotus®, Paradox® formats) / Import of drawings, pictograms and diagrams (BMP, DIB, TIF, JPG, WMF, PNG, PCX, PCT, RAS and EPS formats).
- MarkWare™ also employs all the basic functions of Windows® applications for more intuitive use (copy/paste within the application, print preview, justify, superscript, bold, italics, underline, borders, etc.)
- Compatible with Windows® XP Professional SP3, Windows® 2000 SP4 and Windows Vista™
- Supports new European CLP (Classification, Labelling and Packaging) Hazardous Substances Identification labels containing GHS graphics (Diamond, Square and PIC) and ADR graphics (now also square and with new mark "Dangerous for the environment").
- Fonts: All True Type fonts installed on a PC.
- 15 Bar code protocols: Codabar, code 128 Auto, code 128 A, code 128 B, code 128 C, code 39, EAN/JAN-13, EAN-JAN-18, Extended code 39, HIBC, Interleaved 2/5, UPCA, UPCE 11 Digit, UPCE-0 6 digit, UPCE-1 6 digit
- 19 languages on 1 CD: Bulgarian, Czech, Danish, Dutch, English, Finnish, French, German, Hungarian, Italian, Norwegian, Polish, Portuguese, Romanian, Russian, Slovakian, Slovenian, Spanish, Swedish

MarkWare™		Client Advantages
Windows®-compatible print driver included (Windows® XP Professional SP3, Windows® 2000 SP4 and Vista™ ultimate SP1).	→	No downloads necessary.
Windows® print driver adds the Brady printer to your printer list.	→	Authorizes printing directly from other software such as drawing and other widely used creative programmes (the margins must be adjusted considering that MarkWare™ is designed to work with Brady printers using banner rolls).
No dongle drivers.	→	Hassle free ease of use.
Reinstallation possible.	→	In case of problems, multiple installations on one PC are possible at no extra cost. There is no loss of license in cases of disk failure, OS modification, updating computer equipment, etc.
MarkWare™ employs all the basic functions of Windows® applications (copy/paste within the application print preview, etc ...).	→	Facilitates quick initiation and mastery of the software.
Complies with safety standards.	→	Complies to current legislative guidelines for safety signage and identification.
MarkWare™ works in network environments through local installation (MarkWare™ is not an application for installation on a network server).	→	Local application does not create interference in the proper function of your network. <i>Please note: where a network is in place, the installation of MarkWare™ should be done using the local administrator profile of the PC where the software is to be installed (please consult your IT support service).</i>
Very user-friendly application.	→	Advanced functions allow quick label creation ("align objects", "group objects", foreground/background, zoom, rotation...).
Template designer.	→	Quick and easy creation of personalised label templates.



Intuitive software that understands you.

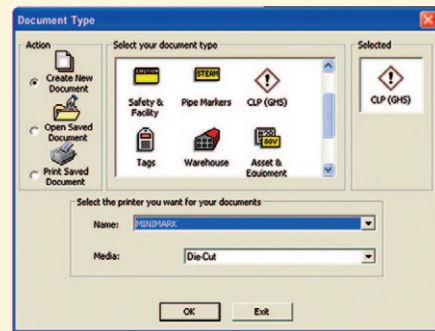
Multiple Applications

- Labels and safety signage (pictograms and/or text)
- Information and instructive signs (including evacuation plans)
- Labels for safety procedures (identification of valves and switches)
- Labels/tags for machine instructions (user directions, lockout-tagout, technical diagrams)
- Pipe markers
- Labels for hazardous substance identification (CLP/GHS, HSID and RTK)
- Labels for hazardous transport (ADR)
- Maintenance labels (servicing instructions, repair instructions)
- Management of fixed assets
- Labels for logistical signage (storage, warehousing, shipping, bar codes)

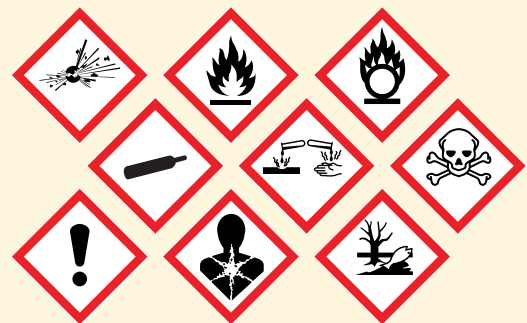
Minimal Requirements

- Processor: 400 MHz or equivalent
- Operating System: Microsoft Windows® 2000 (SP4), XP PRO (SP3), or Vista Ultimate (SP1)
- Minimum 96 MB of RAM (256 MB recommended)
- CD-Rom drive
- Up to 500 MB of available hard disk space (for a complete installation) may be required.
- Minimum display resolution of 640 x 480 at 256 colours (Recommended 1024 x 768 High Colour, 32 bit)
- Print drivers for all printers

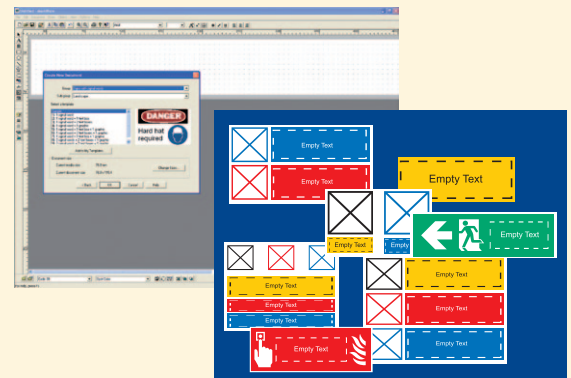
	Order Reference	Description
Full Version	710546	ASSY MARKWARE EU V3.7.6
Upgrade CD-Rom	710546UP	UPGRADE MW EU V3.7.6
Online Upgrade	–	Free of charge via www.bradyeurope.com



Direct access to personalised applications – Text labels – Safety & Facilities – Goods & Equipment – Tags – Pipe markers – Warehousing – Dangerous Transport – Identification of Hazardous Substances...



Represents the CLP symbols in accordance with current legislation.



Includes label template designs. The size of the template adjusts automatically to the size of the installed adhesive roll, regardless of width.