

MILITARY APPLICATIONS

Established in 1976, KME designs and manufactures LCD monitors for the worldwide marine, military and industrial markets. Utilising a highly skilled workforce KME has created a line-up of standard displays and can develop and manufacture custom designs for specific applications. All the monitors are ruggedised to withstand shock and vibration and can be IP sealed for protection against the elements.

The use of high quality components, durable and robust casing, anti-reflective safety glass, transfective enhancements and touchscreen capability makes KME's monitors ideal for demanding military applications.

- **IP Sealed**
- **Daylight Viewable**
- **Indoor & Outdoor Use**
- **Vibration & Shock Resistance**
- **LCD for CRT Replacements**
- **Approved & Approvable to Marine & Military International Standards**
- **Custom Designs**



MILITARY APPLICATIONS



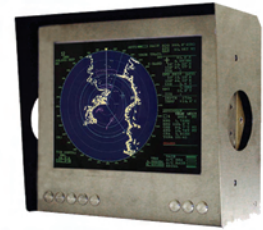
Pic. courtesy of Converteam, Converteam's 'A' Series Workstations

CHASSIS, RACK & PANEL MOUNTS

Available in a range of mounting solutions, KME's monitors are suitable for control rooms, digital signage, ship bridge consoles and a variety of other applications. The monitors can have slow scan (legacy) signal capability, touchscreen displays, IP sealing and a variety of other custom add-ons.

IP SEALED DISPLAYS

Manufactured as a dual core unit with sunshield, this 15" IP67 sealed monitor was built for use on the bridge wing of a military ship. The transfective display is protected by our Heliobond™ technology which means it provides near perfect viewability even in direct sunlight.



LOW TEMPERATURE & LARGE FORMAT

In KME's largest standard screen size, this 46" display was built for use in temperatures as low as -40°C. With IP67 sealing it is suitable for outdoor use making it ideal for public information applications and digital signage in more extreme environments.

HAND-HELD & PORTABLE MONITORS

KME custom design monitors for almost any application. Robustly manufactured with IP65 sealing this 3.5" hand-held monitor was designed for use as a navigational tool. Its reliability and durable housing makes it perfect for the more demanding applications.



MARINE APPROVED DISPLAYS

KME design and manufacture a complete line-up of displays approved to IEC 60945 and offering ECDIS radar compliance. These approvals confirm the durability of the monitors to withstand against shock and vibration associated with marine use and also demonstrate EMC compliance.

TFT FEATURES & OPTIONS:

- Dual Inputs with A/B Switching
- PAL / NTSC Models
- High Speed Serial / Data Interfaces (270Mb/sec)
- AC or DC Power Models
- Slow Scan / Legacy Models
- Scan Reversal / Inversion