

10.4" CRT REPLACEMENT LCD DESKTOP MONITOR

DATASHEET

19LM103A71UN/x

*The slash number behind the part number refers to the version number. A different TFT panel could be used. Therefore these values may vary.

SLOW SCAN LCD MONITORS

The 19LM103A71UN/2 Series of 10.4" LCD monitors has been designed primarily for Slow Scan Legacy Systems as replacements for CRT monitors. They utilise a modern XGA TFT panel and a KME-designed Analog-Digital interface board.

All elements, including a toughened glass protection screen, have been packaged in a compact metal housing. The heavy-duty stand has the AC power supply in its base.

By special development of our Signal Recognition and Scaling software KME has created a Universal flat panel monitor with unique 15kHz to 60kHz display capabilities.

SOLUTIONS FOR DESKTOP MONITORS

- > Specially Designed for Slow Scan Signals
- > CGA, EGA and all VESA standards up to XGA
- > Image Size Adjustment & Save
- > TTL, Analog & Interlaced Signals Accepted
- > Accessory Cables for BNC & 9D Inputs
- > Rugged Metal Construction with Good Stability



10.4" CRT REPLACEMENT LCD DESKTOP MONITOR

DATASHEET

19LM103A71UN/x

* The slash number behind the part number refers to the version number. A different TFT panel could be used. Therefore these values may vary.

Electrical Description		Mechanical Description	
TFT Characteristics:		Dimensions:	Weight: 3kg (approx)
Type:	AM Colour TFT	Input:	5 x BNC 75Ω 15-pin HD Female
Max Resolution:	640 x 480 pixels	Housing	Painted aluminium
Active Display Area:	211.2 x 158.4 mm	User Controls:	Rear Mounted
No. Colours:	256k	On Screen buttons	Brightness, Contrast, H/V Position & Size, Frequency, Frequency Fine
Contrast Ratio:	600:1 typical		
Brightness:	450cd/m ² typical		
Viewing Angles (at CR>10):	160° H, 140° V		
Backlight Life:	50,000 hours typical		
Clock Rate:	80MHz max		
Sync. Type/Level:	Separate H&V (+/-ve) TTL or Composite (-ve) TTL or Sync-on-Green (-ve) 0.3V		
Signal Sync:	Analog RGB 0.7-1.0Vp-p OR TTL RGB>2.75Vp-p (via special TTL accessory cable)		
Synchronisation Range:			
Horizontal scan:	15-60kHz		
Vertical scan:	40-100Hz		
Multiscan Support:	640 x 480 VGA + pre-programmed timings in 15-30kHz range		
Power Supply:	90-260V AC		
Power Consumption:	30W Max	Part Numbers:	
Environmental:		Desktop Model:	19LM103A71UN/2
Storage Temp:	-20 to 60°C		
Operating Temp:	0 to 50°C		

Due to a policy of continuous product development KME reserves the right to change specifications and descriptions without prior notification. All trademarks acknowledged.

* The slash number behind the part number refers to the version number. A different TFT panel could be used. Therefore these values may vary.

SLOW SCAN LCD MONITORS

The 19LM151A71UN/1 Series of 15.0" LCD monitors has been designed primarily for Slow Scan Legacy Systems as replacements for CRT monitors. They utilise a modern XGA TFT panel and a KME-designed Analog-Digital interface board.

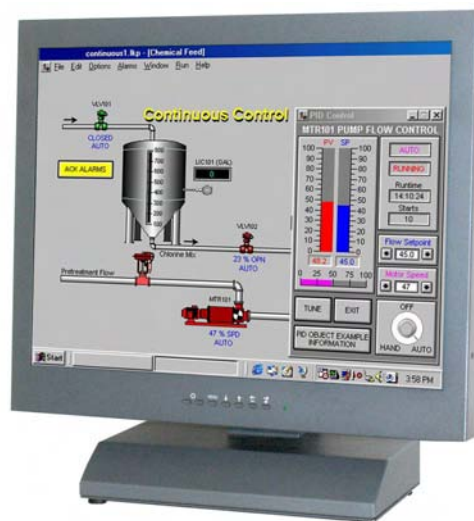
All elements, including a toughened glass protection screen, have been packaged in a compact metal housing. (Dimensions are compatible with previous 15.1" series) The heavy-duty stand has the AC power supply in its base.

By special development of our Signal Recognition and Scaling software KME has created a Universal flat panel monitor with unique 15kHz to 60kHz display capabilities.

Some common Slow Scan Signal timings are factory pre-set. New ones may be added on request. Other signals, which are close to those listed, will give a display but some adjustment may be necessary for full screen performance. The final settings can be easily stored for future use.

SOLUTIONS FOR DESKTOP MONITORS

- > Specially Designed for Slow Scan Signals
- > CGA, EGA and all VESA standards up to XGA
- > Image Size Adjustment & Save
- > TTL, Analog & Interlaced Signals Accepted
- > Accessory Cables for BNC & 9D Inputs
- > Rugged Metal Construction with Good Stability
- > Panel, Rack Mount, Head & Chassis Versions



H. kHz	V. Hz	Pixels		H. kHz	V. Hz	Pixels
15.625	50	714 * 288		15.63	50	560 * 275
15.63	60	808 * 238		15.72	60	564 * 240
15.72	60	508 * 240		15.72	60	604 * 240
15.72	60	640 * 200		16.10	50	564 * 304
16.276	70	640 * 220		16.79	70	577 * 215
17.85	50	508 * 338		21.83	60	640 * 350
20.65	50	640 * 384		24.78	60	640 * 384



15.0" DESKTOP LCD MONITOR

DATASHEET

19LM151A71UN/x

*The slash number behind the part number refers to the version number. A different TFT panel could be used. Therefore these values may vary.

Electrical Description		Mechanical Description	
TFT Characteristics:	Type:	AM Colour TFT	Dimensions: Monitor: 388 x 399 x 187 mm Weight: 6.5Kg
	Max Resolution:	1024 x 768 pixels	Input: 15D BNC x5, 9D
Active Display Area:	304 x 228 mm	Housing	Painted aluminium
No. Colours:	16 million	User Controls:	Front Mounted
Contrast Ratio:	450:1 typical	On Screen buttons	Brightness, Contrast, H/V Position & Size, Frequency, Frequency Fine
Brightness:	250cd/m ² typical		
Viewing Angles (at CR>10):	130 o H, 110 o V		
Backlight Life:	50,000 hours typical		
Clock Rate:	112MHz max		
Sync. Type/Level:	Separate H&V (+/-ve) TTL or Composite (-ve) TTL or Sync-on-Green (-ve) 0.3V		
Signal Sync:	Analog RGB 0.7-1.0Vp-p or TTL RGB >2.75Vp-p		
Synchronisation Range:	Horizontal scan: 15-60kHz Vertical scan: 40-100Hz		
Power Supply:	90-260V 50/60Hz Power Pack inside base		
Power Consumption:	35W Max	Part Numbers:	
Environmental:	Storage Temp:	-20 to 60°C	Desktop Model: 19LM151A71UN/1
	Operating Temp:	0 to 50°C	With Resistive Touch: 19LM151AR71UN/1
Due to a policy of continuous product development KME reserves the right to change specifications and descriptions without prior notification. All trademarks acknowledged.			

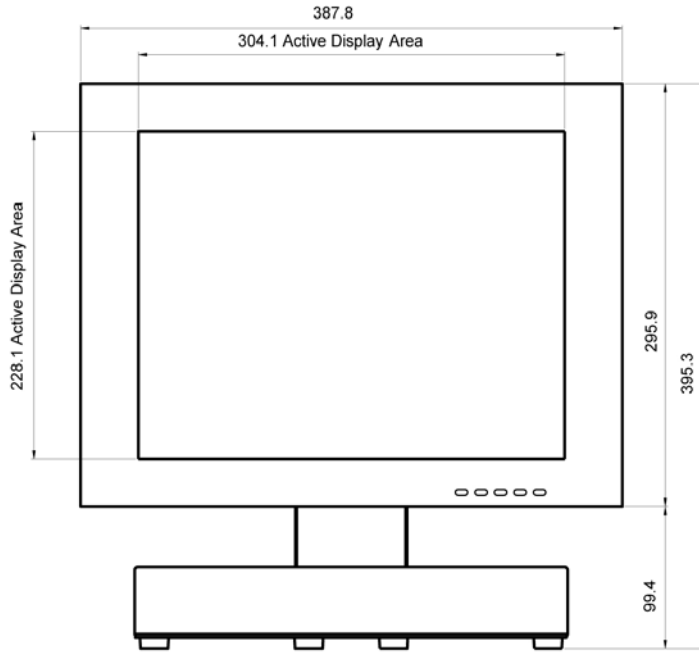
15.0" DESKTOP LCD MONITOR

19LM151A71UN/x

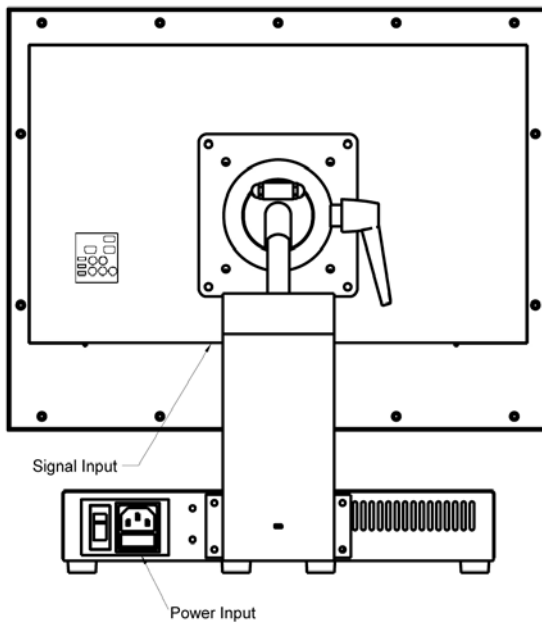
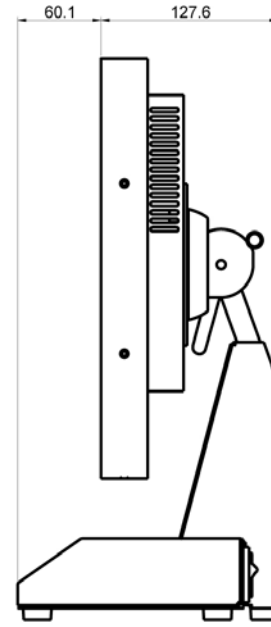
DATASHEET

* The slash number behind the part number refers to the version number. A different TFT panel could be used. Therefore these values may vary.

FRONT VIEW



SIDE VIEW



REAR VIEW

All dimensions in millimetres
(Not to scale)

19.0" SLOW SCAN DESKTOP LCD MONITOR

19LM1901A51UN/x

DATASHEET

*The slash number behind the part number refers to the version number. A different TFT panel could be used. Therefore these values may vary.

Electrical Description		Mechanical Description						
TFT Characteristics:	Type:	AM Colour TFT	Dimensions:		Monitor:	430 x 430 x 187 mm		
	Max Resolution:	1280 x 1024 pixels			Weight:	9kg approx		
	Active Display Area:	376 x 301 mm	Input:		9D, 15D, BNC x 5			
	Response Time:	10ms average, typical	Housing		Painted Steel			
	Contrast Ratio:	1000:1 typical	User Controls:		Front Mounted			
	Brightness:	250cd/m ² typical	On Screen buttons		Brightness, Contrast, Auto set-up Disable, H/V Position, Clock, Clock Phase and Priority			
	Viewing Angles (at CR>10):	178 ° / 178° with CR _≥ 10	Slow Scan Support: (see table examples below)		Pre-programmed Analog or TTL inputs in 15-40kHz range			
	Backlight Life:	50,000 hours typical						
	No. Colours:	16 million	H.kHz	V.Hz	Pixels	H.kHz	V.Hz	Pixels
Video Signal:	Analog RGB 0.7-1.0Vp-p Or TTL >2.75Vp-p		15.625	50	714*288	15.63	50	560*275
			15.63	60	808*238	15.72	60	564*240
Signal Sync:	Separate H & V (+/ve) TTL or Composite (-ve) TTL or Sync- on - Green (-ve) 0.3V		15.72	60	508*240	15.72	60	604*240
			15.72	60	640*200	16.10	50	564*304
			16.276	70	640*220	16.79	70	577*215
Synchronisation Range:	Horizontal scan: 15 to 80kHz Vertical scan: 40 to 100Hz		17.85	50	508*338	21.83	60	640*350
			20.65	50	640*384	24.78	60	640*384
Clock Rates:	150MHz							
Display modes:	VESA Support:	640 x 480 VGA 800 x 600 SVGA 1024 x 768 XGA 1280 x 1024 SXGA (recommended)						
Power Supply:	90-260V 50/60Hz Power Pack inside base							
Power Consumption:	50W (Max)		Part Numbers:					
Environmental:	Storage Temp:	-20 to 60°C			Desktop Model:	19LM1901A51UN/3		
	Operating Temp:	0 to 50°C			Rackmount Model:	29LR1901A51UN/3		
					Display Head only:	29LM1901E51UN/3 (12vDC)		
					AC Power Pack:	20BK0234H		
Due to a policy of continuous product development KME reserves the right to change specifications and descriptions			without prior notification. All trademarks acknowledged.					

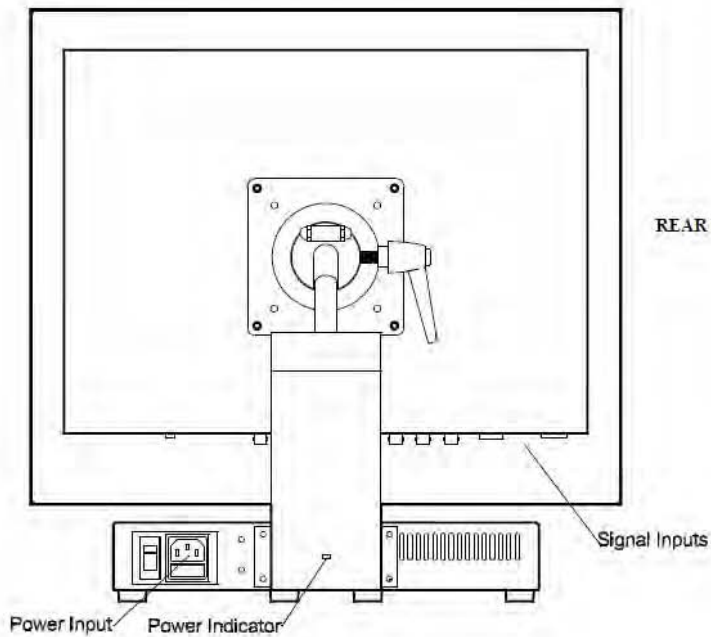
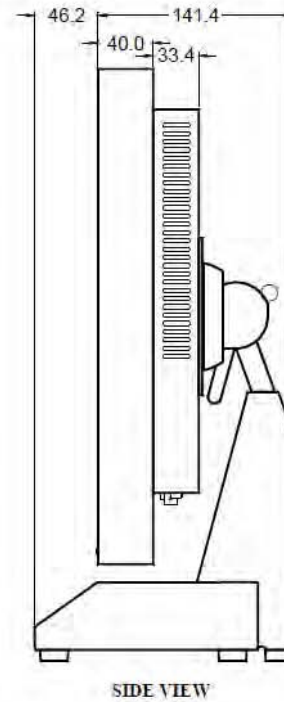
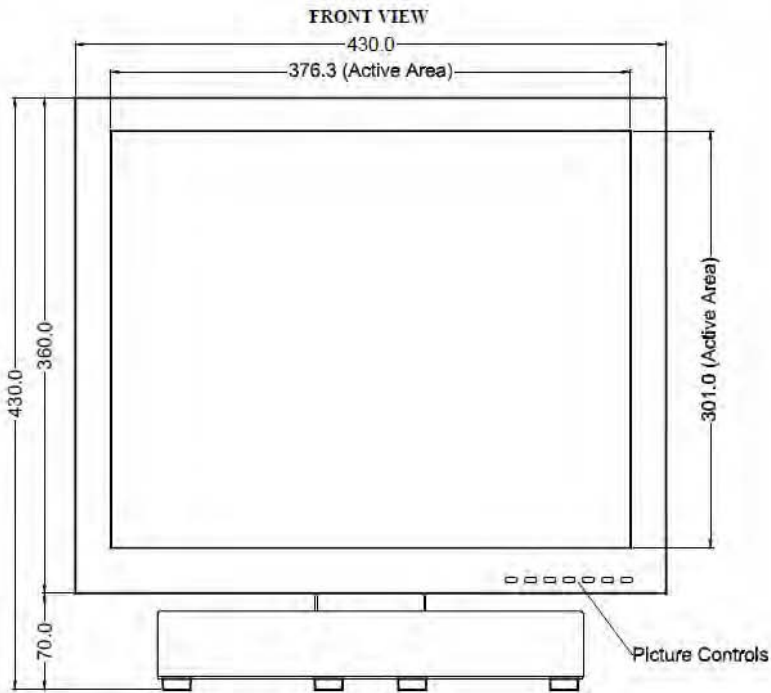
19.0" SLOW SCAN DESKTOP

DATASHEET

LCD MONITOR

19LM1901A51UN/x

*The slash number behind the part number refers to the version number. A different TFT panel could be used. Therefore these values may vary.



All dimensions in millimetres
(Not to scale)

*The slash number behind the part number refers to the version number. A different TFT panel could be used. Therefore these values may vary.

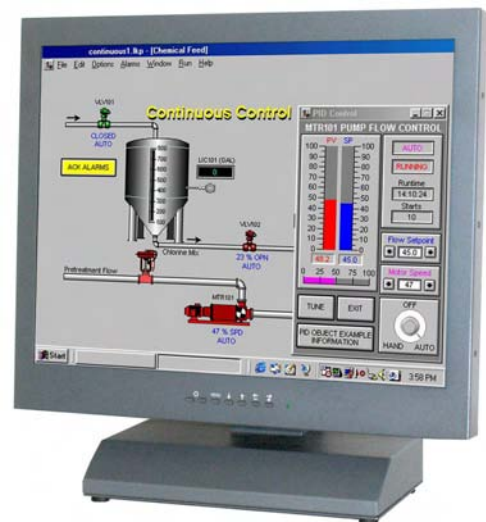
SLOW SCAN LCD MONITORS

The 19LM211A51UN series of 21.3" LCD monitors has been designed primarily for Slow Scan Legacy Systems as replacements for 20"/24" CRT monitors. They utilize a modern UXGA TFT (1600 x 1200 pixels) panel and a KME-designed Analog-Digital interface board. All elements, including a toughened glass protection screen, have been packaged in a compact metal housing. The AC power supply is integrated in the monitor head.

By special development of their own Signal Recognition and Scaling software, and access to an extensive library of older signal timings gained from 25+ years of CRT monitor manufacturing, KME has created a Multiscan ("Universal") flat panel monitor with unique 15kHz to 80kHz display capabilities. Some common Slow Scan Signal timings are factory pre-set. New ones may be added on request. Other signals, which are close to those listed, will give a display but some adjustment may be necessary for full screen performance. The final settings can be easily stored for future use.

SOLUTIONS FOR DESKTOP MONITORS

- > Specially Designed for Slow Scan Signals
- > CGA, EGA and all VESA standards up to XGA
- > Image Size Adjustment & Save
- > TTL, Analog & Interlaced Signals Accepted
- > Accessory Cables for BNC & 9D Inputs
- > Rugged Metal Construction with Good Stability
- > Panel, Rack Mount, Head & Chassis Versions



21.3" DESKTOP LCD MONITOR

DATASHEET

19LM211A51UN/x

* The slash number behind the part number refers to the version number. A different TFT panel could be used. Therefore these values may vary.

Electrical Description		Mechanical Description							
TFT Characteristics:	Type:	AM Colour TFT	Dimensions:		Monitor:	483 x 479 x 188 mm			
	Max Resolution:	1600 x 1200 pixels			Weight:	11Kg approx			
	Active Display Area:	432 x 324 mm	Input:		15D BNC x5, 9D				
	No. Colours:	16 million	Housing		Painted aluminium				
	Contrast Ratio:	800:1 typical	User Controls:		Front Mounted				
	Brightness:	280cd/m ² typical	On Screen buttons		Brightness, Contrast, H/V Position, auto set-up disable, clock, clock phase and priority				
	Viewing Angles (at CR>10):	178 ° H, 178 ° V	H. kHz	V. Hz	Pixels		H. kHz	V. Hz	Pixels
	Backlight Life:	50,000 hours typical	15.625	50	714 * 288		15.63	50	560 * 275
	Clock Rate:	135MHz max	15.63	60	808 * 238		15.72	60	564 * 240
Sync. Type/Level:	Separate H&V (+/-ve) TTL or Composite (-ve) TTL or Sync-on-Green (-ve) 0.3V		15.72	60	508 * 240		15.72	60	604 * 240
Signal Sync:			Analog RGB 0.7-1.0Vp-p	15.72	60	640 * 200		16.10	50
Synchronisation Range:	Horizontal scan:	15-91kHz	16.276	70	640 * 220		16.79	70	577 * 215
	Vertical scan:	40-80Hz	17.85	50	508 * 338		21.83	60	640 * 350
Slow Scan Support: (see table examples)	Pre-programmed analog or TTL		20.65	50	640*384		24.78	60	640 * 384
Power Supply:	90-260V 50/60Hz Power Pack inside base								
Power Consumption:	70W Max		Part Numbers:						
Environmental:	Storage Temp:	-20 to 60°C			Desktop Model:	19LM211A51UN/1			
	Operating Temp:	0 to 50°C							

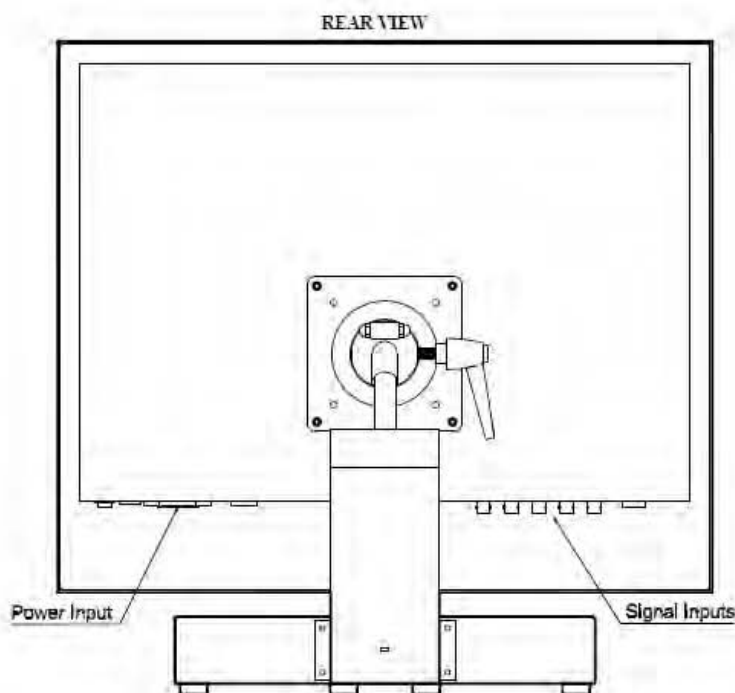
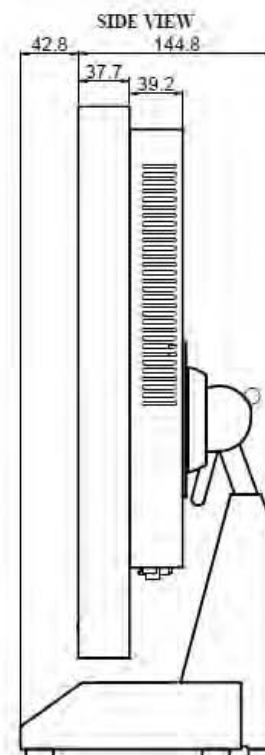
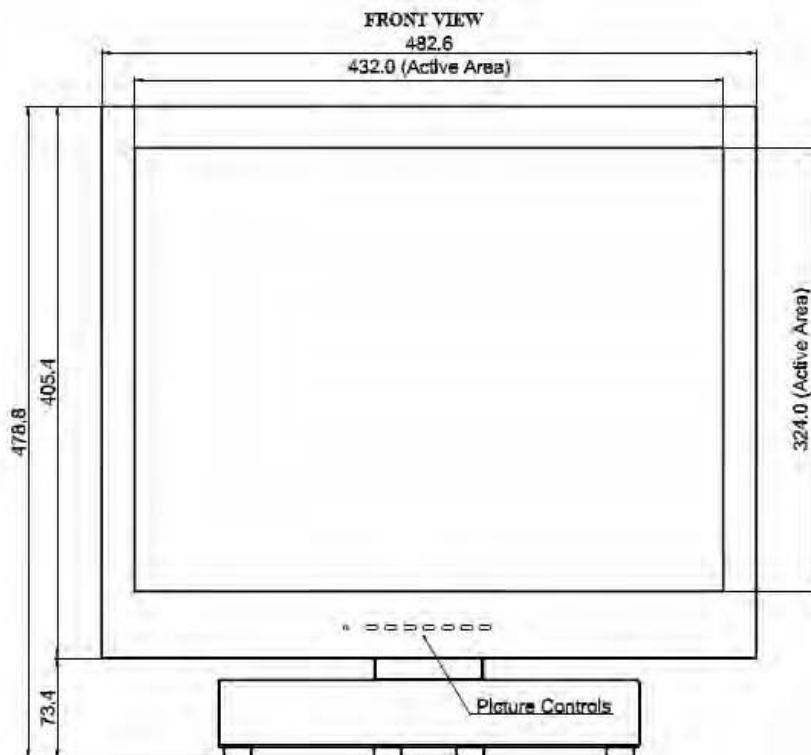
Due to a policy of continuous product development KME reserves the right to change specifications and descriptions without prior notification. All trademarks acknowledged.

21.3" DESKTOP LCD MONITOR

19LM211A51UN/x

DATASHEET

* The slash number behind the part number refers to the version number. A different TFT panel could be used. Therefore these values may vary.



All dimensions in millimetres
(Not to scale)