

8.4" CRT REPLACEMENT LCD MONITOR HEAD

29LM081E71UN/x

DATASHEET

* The slash number behind the part number refers to the version number. A different TFT panel could be used. Therefore these values may vary.

SLOW SCAN LCD MONITORS

The 29LM081E71UN/1 series of LCD monitor Heads has been designed for industrial applications in the Control field and other users that require a compact SVGA monitor with a small footprint, high brightness display with good viewing angles. The rugged, metal construction of the monitor ensures exceptional stability, especially important when touchscreen operation is necessary. VESA fixings for Ergo Arm Mounting are on the rear cover.

The KME A/D board has been designed to accept a wide range of signal timings from 15kHz up to VGA standard, including CGA & EGA legacy signals. Set-up controls for fine tuning of the display are located at the rear of the monitor. Once set, no further adjustments should be required, and the last setting is stored in memory.

Analogue & TTL signals are accepted via a 15D connector and a 2m VGA cable is supplied with the unit. KME can supply 9D-15D or BNC to 15D interface cables as required.

SOLUTIONS FOR DESKTOP MONITORS

- > High Brightness/High Contrast TFT panel
- > 15 to 60kHz Horizontal Scanning range
- > 40 to 100 Hz Vertical Scanning range
- > Programmable for non-standard Legacy signals
- > Rear OSD Controls for maximum versatility
- > Optional Touchscreen Integration



8.4" CRT REPLACEMENT LCD MONITOR HEAD

DATASHEET

29LM081E71UN/x

* The slash number behind the part number refers to the version number. A different TFT panel could be used. Therefore these values may vary.

Electrical Description		Mechanical Description	
TFT Characteristics:	Type:	AM p-Si Colour TFT	Dimensions: Monitor (approx): 222 x 162 x 70mm
	Max Resolution:	800 x 600 pixels	Weight: 2.5kg (approx)
Active Display Area:	170.4 x 127.8 mm	Input:	15-pin HD Female
No. Colours:	256k	Housing	Painted aluminium
Contrast Ratio:	500:1 typical	User Controls:	Rear Mounted
Brightness:	350cd/m ² typical	On Screen buttons	Brightness, Contrast, H/V Position & Size, Frequency, Frequency Fine
Viewing Angles (at CR>10):	120° H, 100° V		
Backlight Life:	50,000 hours typical		
Clock Rate:	80MHz max		
Sync. Type/Level:	Separate H&V (+/-ve) TTL or Composite (-ve) TTL or Sync-on-Green (-ve) 0.3V		
Signal Sync:	Analog RGB 0.7-1.0Vp-p OR TTL RGB>2.75Vp-p		
Synchronisation Range:			
Horizontal scan:	15-60kHz		
Vertical scan:	40-100Hz		
Multiscan Support:	800 x 600 SVGA 640 x 480 VGA + pre-programmed timings in 15-30kHz range		
Power Supply:	12V DC		
Power Consumption:	25W Max	Part Numbers:	
Environmental:		Desktop Model:	29LM081E71UN/1
Storage Temp:	-20 to 60°C		
Operating Temp:	0 to 50°C		

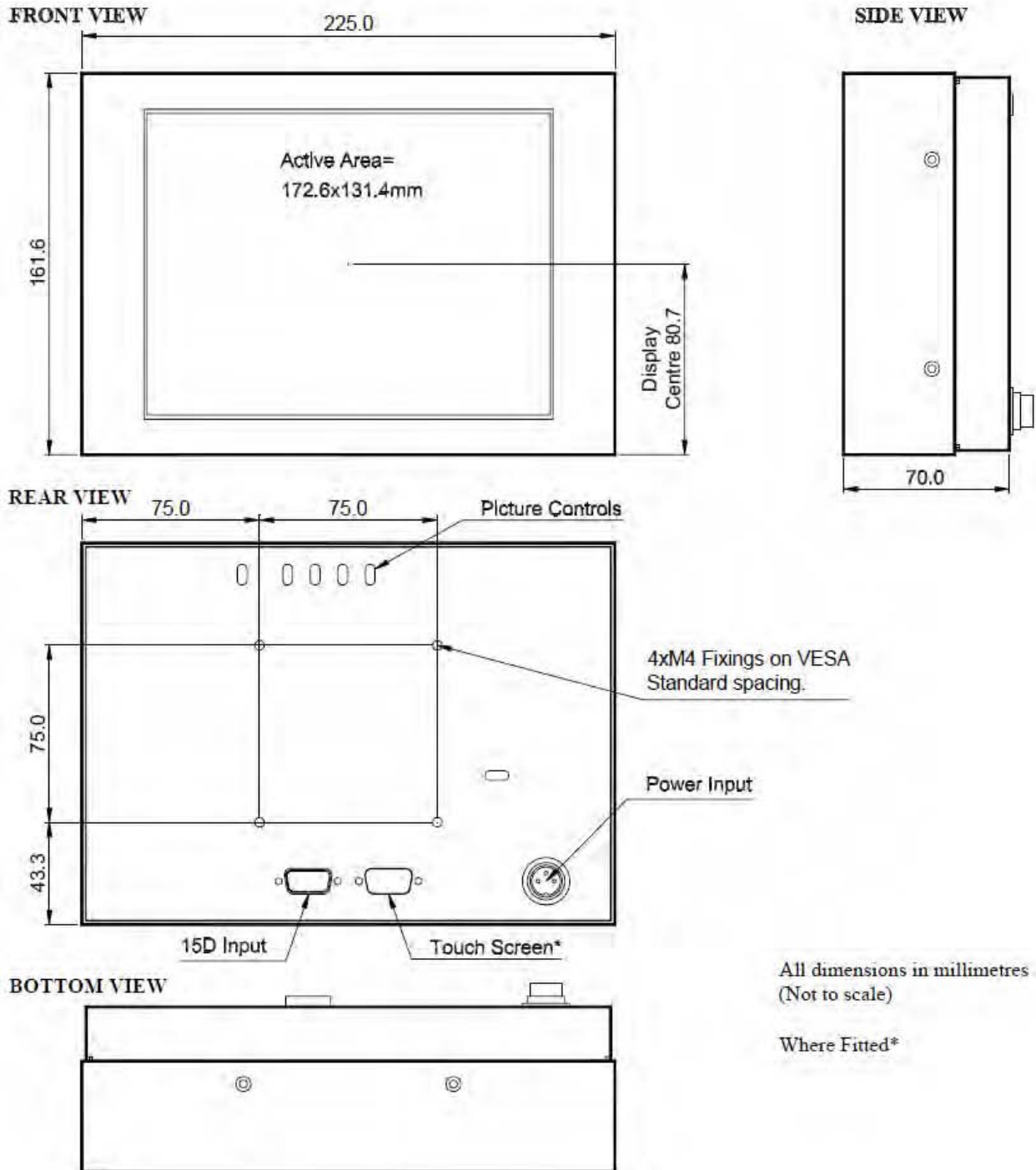
Due to a policy of continuous product development KME reserves the right to change specifications and descriptions without prior notification. All trademarks acknowledged.

8.4" CRT REPLACEMENT LCD MONITOR HEAD

DATASHEET

29LM081E71UN/x

* The slash number behind the part number refers to the version number. A different TFT panel could be used. Therefore these values may vary.



10.4" CRT REPLACEMENT LCD MONITOR HEAD

29LM103E71UN/x

DATASHEET

* The slash number behind the part number refers to the version number. A different TFT panel could be used. Therefore these values may vary.

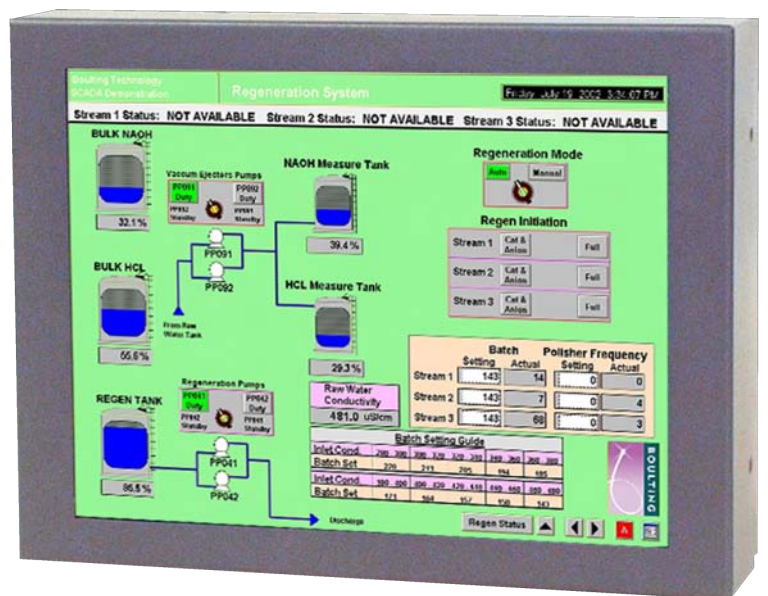
SLOW SCAN LCD MONITORS

The 29LM101E71UN series of LCD monitor heads have been designed for industrial applications in the control field, and other users that require a compact VGA monitor with a small footprint and a high brightness display with good viewing angles. The rugged, metal construction of the monitor ensures exceptional stability, especially important when touch-screen operation is necessary. VESA fixings for Ergo Arm Mounting are on the rear cover.

The KME A/D board has been designed to accept a wide range of signal timings from 15kHz up to VGA standard, including CGA & EGA legacy signals. Set-up controls for finetuning of the display are located at the rear of the monitor. Once set, no further adjustments should be required, and the last setting is stored in memory.

SOLUTIONS FOR DESKTOP MONITORS

- > High Brightness/High Contrast TFT panel
- > 15 to 60kHz Horizontal Scanning range
- > 40 to 100 Hz Vertical Scanning range
- > Programmable for non-standard Legacy signals
- > Rear OSD Controls for maximum versatility
- > Optional Touchscreen Integration



10.4" CRT REPLACEMENT LCD MONITOR HEAD

DATASHEET

29LM103E71UN/x

* The slash number behind the part number refers to the version number. A different TFT panel could be used. Therefore these values may vary.

Electrical Description		Mechanical Description	
TFT Characteristics:	Type:	AM Colour TFT	Dimensions: Monitor (approx): 258 x 199.5 x 70mm
	Max Resolution:	640 x 480 pixels	Weight: 3kg (approx)
Active Display Area:	211.2 x 158.4 mm	Input:	5 x BNC 75Ω 15-pin HD Female
No. Colours:	256k	Housing	Painted aluminium
Contrast Ratio:	600:1 typical	User Controls:	Rear Mounted
Brightness:	450cd/m ² typical	On Screen buttons	Brightness, Contrast, H/V Position & Size, Frequency, Frequency Fine
Viewing Angles (at CR>10):	160° H, 140° V		
Backlight Life:	50,000 hours typical		
Clock Rate:	80MHz max		
Sync. Type/Level:	Separate H&V (+/-ve) TTL or Composite (-ve) TTL or Sync-on-Green (-ve) 0.3V		
Signal Sync:	Analog RGB 0.7-1.0Vp-p OR TTL RGB>2.75Vp-p (via special TTL accessory cable)		
Synchronisation Range:	Horizontal scan: 15-60kHz Vertical scan: 40-100Hz		
Multiscan Support:	640 x 480 VGA + pre-programmed timings in 15-30kHz range		
Power Supply:	12V DC		
Power Consumption:	30W Max	Part Numbers:	
Environmental:	Storage Temp: -20 to 60°C Operating Temp: 0 to 50°C	Desktop Model:	29LM103E71UN/1

Due to a policy of continuous product development KME reserves the right to change specifications and descriptions without prior notification. All trademarks acknowledged.

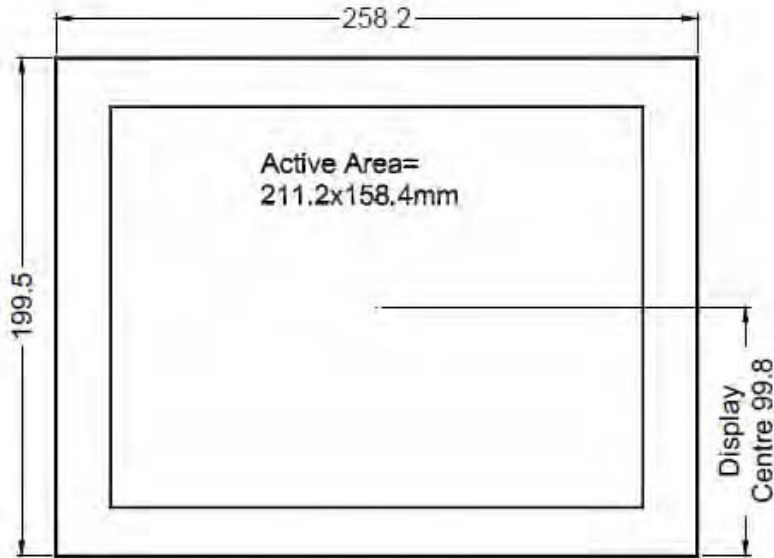
10.4" CRT REPLACEMENT LCD MONITOR HEAD

DATASHEET

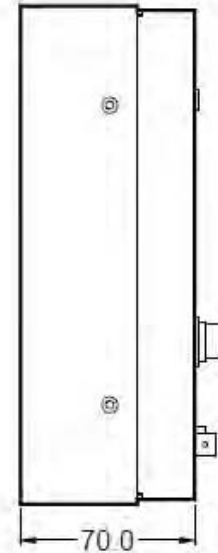
29LM103E71UN/x

* The slash number behind the part number refers to the version number. A different TFT panel could be used. Therefore these values may vary.

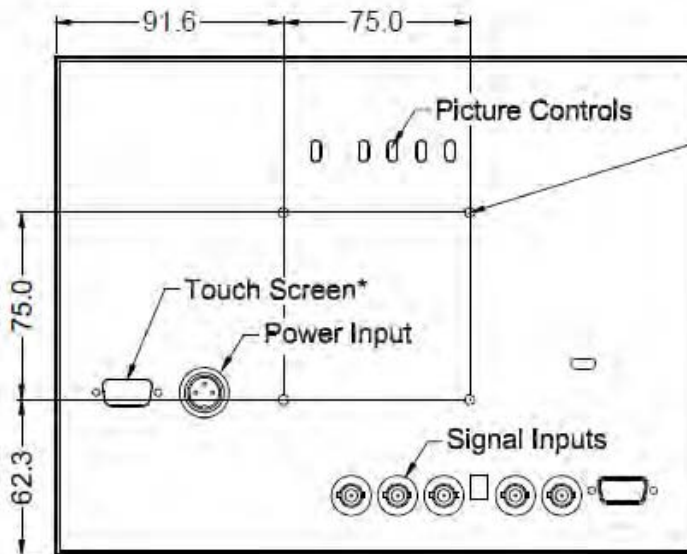
FRONT VIEW



SIDE VIEW



REAR VIEW

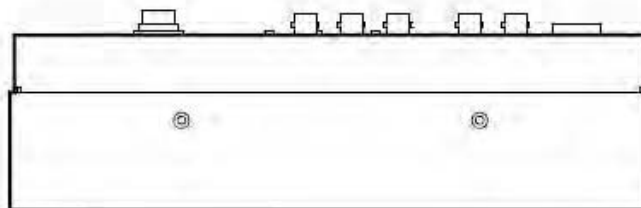


4xM4 Fixings on VESA Standard spacing.

All dimensions in millimetres
(Not to scale)

Where Fitted*

BOTTOM VIEW



12.1" CRT REPLACEMENT LCD MONITOR HEAD

29LM123E71UN/X

DATASHEET

* The slash number behind the part number refers to the version number. A different TFT panel could be used. Therefore these values may vary.

SLOW SCAN LCD MONITORS

The 29LM123E71UN/1 series of Industrial LCD monitors have been designed as replacements for 12" CRT monitors now that supplies of 12" CRTs are difficult to obtain. Ease of integration into a wide range of Measurement, Instrumentation and Human-Machine interface applications has been a key consideration.

KME has designed a rugged LCD monitor module, of minimum width, to match the dimensions of its 12" CRT monitor chassis. The monitor is housed in a rugged metal case with rear fixing points. The LCD module is ventilated for best reliability when mounted within the OEM enclosure. EMC considerations include the use of a metal shield over the front of the LCD panel. Toughened, non-glare safety glass protects the LCD.

The A/D board has been designed to accept a wide range of signal timings from 15kHz up to SVGA standard, including CGA & EGA legacy signals. Set-up controls for fine-tuning of the display are located at the rear of the monitor. Once set, no further adjustments should be required, and the last setting is stored in memory.

SOLUTIONS FOR DESKTOP MONITORS

- > CGA/EGA/VGA/SVGA compatible
- > Analogue Video inputs via BNC/15HD
- > TTL Inputs via 9D- 15D Accessory Cable
- > Programmable for non-standard Legacy signals
- > Rear OSD Controls for maximum versatility
- > Optional Touchscreen Integration



12.1" CRT REPLACEMENT LCD MONITOR HEAD

DATASHEET

29LM123E71UN/x

* The slash number behind the part number refers to the version number. A different TFT panel could be used. Therefore these values may vary.

Electrical Description		Mechanical Description	
TFT Characteristics:	Type:	AM Colour TFT	Dimensions: Monitor (approx): 294 x 238 x 55mm Weight: 3.5kg (approx)
	Max Resolution:	800 x 600 pixels	Input: 5 x BNC 75R 15-pin HD Female
Active Display Area:	246 x 184.5 mm	Housing: Painted aluminium	User Controls: Rear Mounted
No. Colours:	256k	On Screen buttons: Brightness, Contrast, H/V Position & Size, Frequency, Frequency Fine, Colour	
Contrast Ratio:	500:1 typical		
Brightness:	400cd/m ² typical		
Viewing Angles (at CR>10):	140° H, 110° V		
Backlight Life:	50,000 hours typical		
Clock Rate:	80MHz max		
Sync. Type/Level:	Separate H&V (+/-ve) TTL or Composite (-ve) TTL or Sync-on-Green (-ve) 0.3V		
Signal Sync:	Analog RGB 0.7-1.0Vp-p OR TTL RGB>2.75Vp-p (via special TTL accessory cable)		
Synchronisation Range:	Horizontal scan: 15-60kHz Vertical scan: 40-100Hz		
Multiscan Support:	800 x 600 SVGA 640 x 480 VGA 640 x 400 640 x 350 & other pre-programmed timings in 15-30kHz range		
Power Supply:	12V DC		
Power Consumption:	30W Max	Part Numbers:	
Environmental:	Storage Temp: -20 to 70°C Operating Temp: 0 to 55°C	Desktop Model:	29LM123E71UN/1

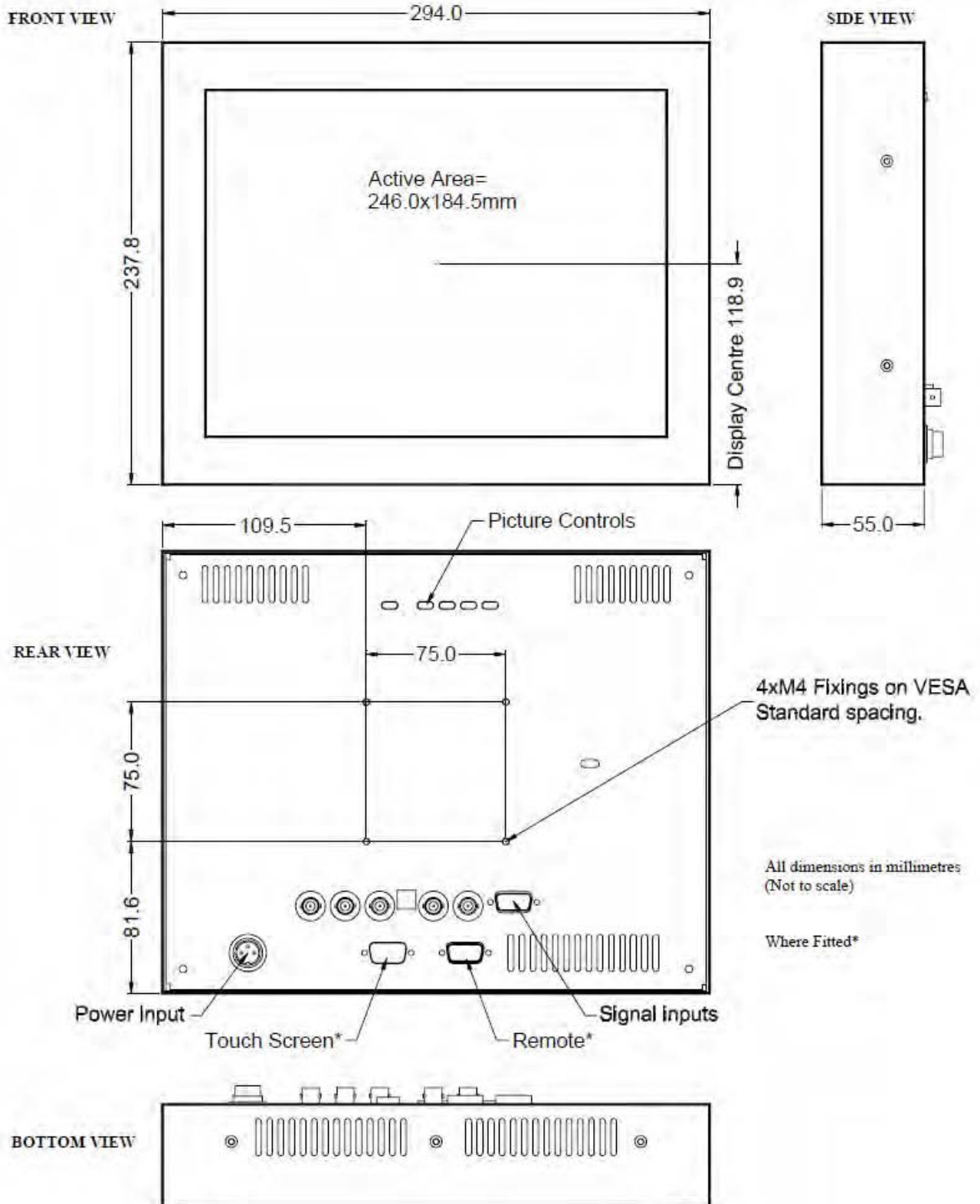
Due to a policy of continuous product development KME reserves the right to change specifications and descriptions without prior notification. All trademarks acknowledged.

12.1" CRT REPLACEMENT LCD MONITOR HEAD

DATASHEET

29LM123E71UN/x

* The slash number behind the part number refers to the version number. A different TFT panel could be used. Therefore these values may vary.



15" CRT REPLACEMENT LCD MONITOR HEAD

29LM153E78UN/x

DATASHEET

* The slash number behind the part number refers to the version number. A different TFT panel could be used. Therefore these values may vary.

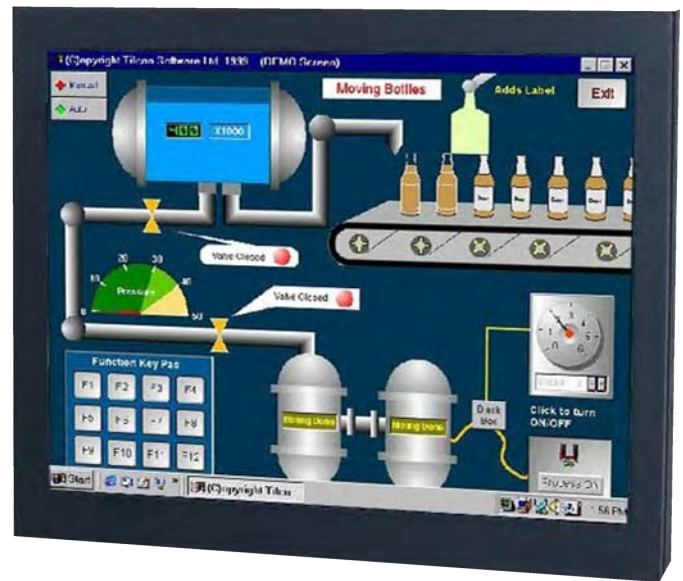
SLOW SCAN LCD MONITORS

The 29LM153E78UN/2 series of 15.0" LCD monitors has been designed primarily for Slow Scan Legacy Systems as replacements for CRT monitors. They utilise a modern XGA TFT (1024 x 768 pixels) panel and a KME-designed Analog-Digital interface board. All elements, including a toughened glass protection screen, have been packaged in a Black metal housing of 338mm width. This series features OSD controls on the rear of the monitor. VESA fixings for Ergo Arm mounting are on the rear cover.

By special development of their own Signal Recognition and Scaling software, and access to an extensive library of older signal timings gained from 25+ years of CRT monitor manufacturing, KME has created a Universal flat panel monitor with unique 15kHz to 60kHz display capabilities. Some common Slow Scan Signal timings are factory pre-set. New ones may be added on request. Other signals, which are close to those listed, will give a display but some adjustment may be necessary for full screen performance. The final settings can be easily stored for future use.

SOLUTIONS FOR SLOW SCAN MONITORS

- > CGA, EGA and all VESA standards up to XGA
- > Image Size Adjustment & Save
- > TTL, Analog & Interlaced Signals accepted
- > Specially designed for Slow Scan Signals
- > Rear OSD Controls for maximum versatility
- > VESA Standard Fixings for Ergo Arm



15" CRT REPLACEMENT LCD MONITOR HEAD

29LM153E78UN/x

DATASHEET

* The slash number behind the part number refers to the version number. A different TFT panel could be used. Therefore these values may vary.

Electrical Description		Mechanical Description	
TFT Characteristics:	Type:	AM Colour TFT	Dimensions: Monitor (approx): 338 x 270 x 53 mm
	Max Resolution:	1024 x 768 pixels	Weight: 4.5kg (approx)
Active Display Area:	304 x 228 mm	Input:	15D + 5 x BNC
No. Colours:	16 million	Housing	Painted aluminium
Contrast Ratio:	450:1 typical	User Controls:	Rear Mounted
Brightness:	250cd/m ² typical	On Screen buttons	Brightness, Contrast, H/V Position & Size, Frequency, Frequency Fine,
Viewing Angles (at CR>10):	130° H, 110° V		
Backlight Life:	50,000 hours typical		
Sync. Type/Level:	Separate H&V (+/-ve) TTL or Composite (-ve) TTL or Sync-on-Green (-ve) 0.3V		
Signal Sync:	Analog RGB 0.7-1.0Vp-p OR TTL RGB>2.75Vp-p (via special TTL accessory cable)		
Synchronisation Range:	Horizontal scan: 15-60kHz Vertical scan: 40-100Hz		
Multiscan Support:	1024 x 768 XGA 800 x 600 SVGA 640 x 480 VGA + pre-programmed timings in 15-30kHz range		
Power Supply:	12V DC		
Power Consumption:	35W Max	Part Numbers:	
Environmental:	Storage Temp: -20 to 60°C Operating Temp: 0 to 50°C	Desktop Model:	29LM153E78UN/2

Due to a policy of continuous product development KME reserves the right to change specifications and descriptions without prior notification. All trademarks acknowledged.

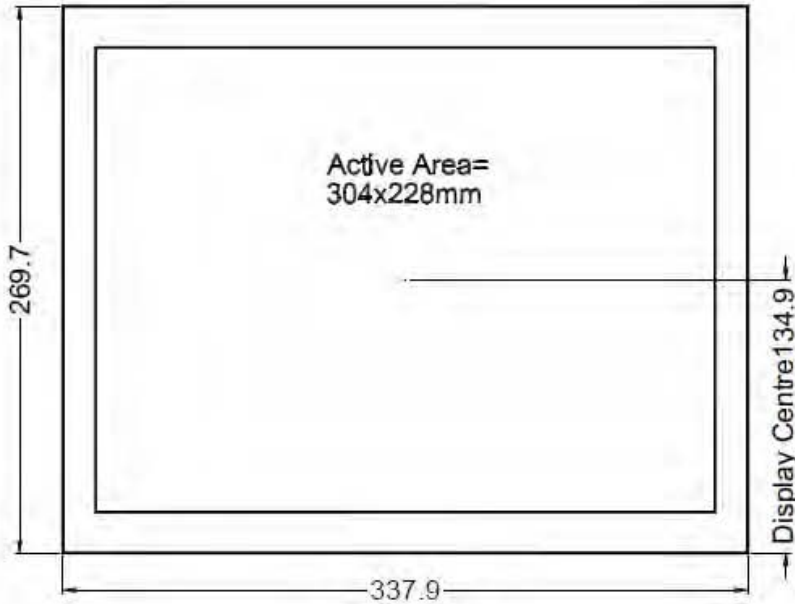
15" CRT REPLACEMENT LCD MONITOR HEAD

DATASHEET

29LM153E78UN/x

* The slash number behind the part number refers to the version number. A different TFT panel could be used. Therefore these values may vary.

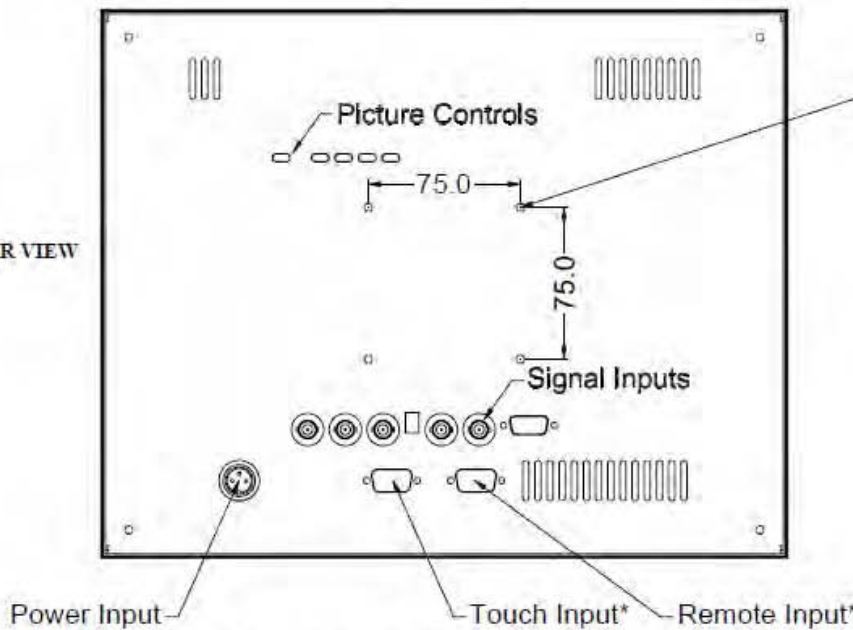
FRONT VIEW



SIDE VIEW



REAR VIEW

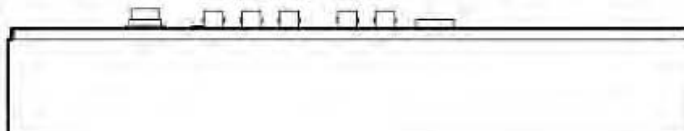


4 x M4 Fixings on VESA Standard spacing.

All dimensions in millimetres
(Not to scale)

Where Fitted*

BOTTOM VIEW



19.0" SLOW SCAN LCD HEAD MONITOR

29LM1901E51UN/x

DATASHEET

* The slash number behind the part number refers to the version number. A different TFT panel could be used. Therefore these values may vary.

HIGH QUALITY, SLOW SCAN LEGACY SYSTEM REPLACEMENTS

The 29LM1901E51UN/3 series of Industrial LCD monitors have been designed as replacements for 19" CRT monitors now that supplies of 19" CRTs are difficult to obtain. Ease of integration into a wide range of Measurement, Instrumentation and Human-Machine interface applications has been a key consideration.

KME has designed a rugged LCD monitor module, of minimum width, to match the dimensions of its 19" CRT monitor chassis. The monitor is housed in a rugged metal case with rear fixing points. The LCD module is ventilated for best reliability when mounted within the OEM enclosure. EMC considerations include the use of a metal shield over the front of the LCD panel. Toughened, non-glare safety glass protects the LCD.

The A/D board has been designed to accept a wide range of signal timings from 15kHz up to SVGA standard, including CGA & EGA legacy signals. Set-up controls for fine-tuning of the display are located at the rear of the monitor. Once set, no further adjustments should be required, and the last setting is stored in memory.

SOLUTIONS FOR SLOW SCAN MONITORS

- > CGA/EGA/VGA/SVGA compatible
- > Analogue Video inputs via BNC/15HD
- > TTL Inputs via 9D- 15D Accessory Cable
- > Programmable for non-standard Legacy signals
- > Rear OSD Controls for maximum versatility
- > Optional Touchscreen Integration



19.0" SLOW SCAN LCD HEAD MONITOR

29LM1901E51UN/x

DATASHEET

* The slash number behind the part number refers to the version number. A different TFT panel could be used. Therefore these values may vary.

Electrical Description		Mechanical Description					
TFT Characteristics:				Dimensions:		Weight: 9kg approx	
Type:	AM Colour TFT	Input:		9D, 15D, BNC x 5			
Max Resolution:	1280 x 1024 pixels	Housing		Painted Steel			
Active Display Area:	376 x 301 mm	User Controls:		Front Mounted			
Response Time:	10ms average, typical	On Screen buttons		Brightness, Contrast, Auto set-up Disable, H/V Position, Clock, Clock Phase and Priority			
Contrast Ratio:	1000:1 typical	Slow Scan Support: (see table examples below)		Pre-programmed Analog or TTL inputs in 15-40kHz range			
Brightness:	250cd/m ² typical						
Viewing Angles (at CR>10):	178° / 178° with CR _≥ 10						
Backlight Life:	50,000 hours typical						
No. Colours:	16 million	H.kHz	V.Hz	Pixels	H.kHz	V.Hz	Pixels
Video Signal:	Analog RGB 0.7-1.0Vp-p Or TTL >2.75Vp-p	15.625	50	714*288	15.63	50	560*275
		15.63	60	808*238	15.72	60	564*240
Signal Sync:	Separate H & V (+/ve) TTL or Composite (-ve) TTL or Sync- on - Green (-ve) 0.3V	15.72	60	508*240	15.72	60	604*240
		15.72	60	640*200	16.10	50	564*304
Synchronisation Range:		16.276	70	640*220	16.79	70	577*215
Horizontal scan:	15 to 80kHz	17.85	50	508*338	21.83	60	640*350
Vertical scan:	40 to 100Hz	20.65	50	640*384	24.78	60	640*384
Clock Rates:	150MHz						
Display modes:							
VESA Support:	640 x 480 VGA 800 x 600 SVGA 1024 x 768 XGA 1280 x 1024 SXGA (recommended)						
Power Supply:	12V DC						
Power Consumption:	50W (Max)	Part Numbers:					
Environmental:				Head Model:		29LM1901E51UN/3	
Storage Temp:	-20 to 60°C						
Operating Temp:	0 to 50°C						

Due to a policy of continuous product development KME reserves the right to change specifications and descriptions without prior notification. All trademarks acknowledged.

21.3" CRT REPLACEMENT LCD MONITOR HEAD 29LM211A51UN/X

DATASHEET

* The slash number behind the part number refers to the version number. A different TFT panel could be used. Therefore these values may vary.

SLOW SCAN LCD MONITORS

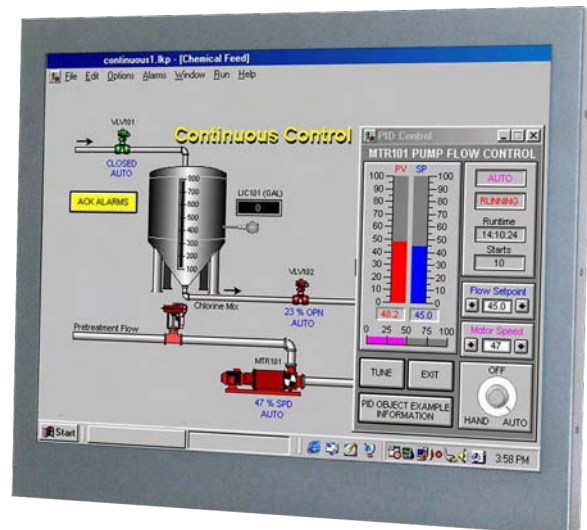
The 29LM211A51UN/1 series of Industrial LCD monitors have been designed as replacements for 21" CRT monitors now that supplies of 21" CRTs are difficult to obtain. Ease of integration into a wide range of Measurement, Instrumentation and Human-Machine interface applications has been a key consideration.

KME has designed a rugged LCD monitor module, of minimum width, to match the dimensions of its 21" CRT monitor chassis. The monitor is housed in a rugged metal case with rear fixing points. The LCD module is ventilated for best reliability when mounted within the OEM enclosure. EMC considerations include the use of a metal shield over the front of the LCD panel. Toughened, non-glare safety glass protects the LCD.

The A/D board has been designed to accept a wide range of signal timings from 15kHz up to SVGA standard, including CGA & EGA legacy signals. Set-up controls for fine-tuning of the display are located at the rear of the monitor. Once set, no further adjustments should be required, and the last setting is stored in memory.

SOLUTIONS FOR DESKTOP MONITORS

- > CGA/EGA/VGA/SVGA compatible
- > Analogue Video inputs via BNC/15HD
- > TTL Inputs via 9D- 15D Accessory Cable
- > Programmable for non-standard Legacy signals
- > Rear OSD Controls for maximum versatility
- > Optional Touchscreen Integration



21.3" CRT REPLACEMENT LCD MON- ITOR HEAD

DATASHEET

29LM211A51UN/x

* The slash number behind the part number refers to the version number. A different TFT panel could be used. Therefore these values may vary.

Electrical Description		Mechanical Description						
TFT Characteristics:		Dimensions:			Weight: 11Kg approx			
Type:	AM Colour TFT	Input:			15D BNC x5, 9D			
Max Resolution:	1600 x 1200 pixels	Housing			Painted aluminium			
Active Display Area:	432 x 324 mm	User Controls:			Front Mounted			
No. Colours:	16 million	On Screen buttons			Brightness, Contrast, H/V Position, auto set-up disable, clock, clock phase and priority			
Contrast Ratio:	800:1 typical							
Brightness:	280cd/m ² typical							
Viewing Angles (at CR>10):	178 ° H, 178 ° V	H. kHz	V. Hz	Pixels		H. kHz	V. Hz	Pixels
Backlight Life:	50,000 hours typical	15.625	50	714 * 288		15.63	50	560 * 275
Clock Rate:	135MHz max	15.63	60	808 * 238		15.72	60	564 * 240
Sync. Type/Level:	Separate H&V (+/-ve) TTL or Composite (-ve) TTL or Sync-on-Green (-ve) 0.3V	15.72	60	508 * 240		15.72	60	604 * 240
Signal Sync:	Analog RGB 0.7-1.0Vp-p	15.72	60	640 * 200		16.10	50	564 * 304
Synchronisation Range:		16.276	70	640 * 220		16.79	70	577 * 215
Horizontal scan:	15-91kHz	17.85	50	508 * 338		21.83	60	640 * 350
Vertical scan:	40-80Hz	20.65	50	640*384		24.78	60	640 * 384
Slow Scan Support: (see table examples)	Pre-programmed analog or TTL							
Power Supply:		90-260V 50/60Hz Power Pack inside base						
Power Consumption:		70W Max						
Environmental:		Part Numbers:			Desktop Model:			
Storage Temp:	-20 to 60°C	29LM211A51UN/1						
Operating Temp:	0 to 50°C							

Due to a policy of continuous product development KME reserves the right to change specifications and descriptions without prior notification. All trademarks acknowledged.

26" CRT REPLACEMENT LCD MONITOR HEAD

DATASHEET

29LM261A51UN

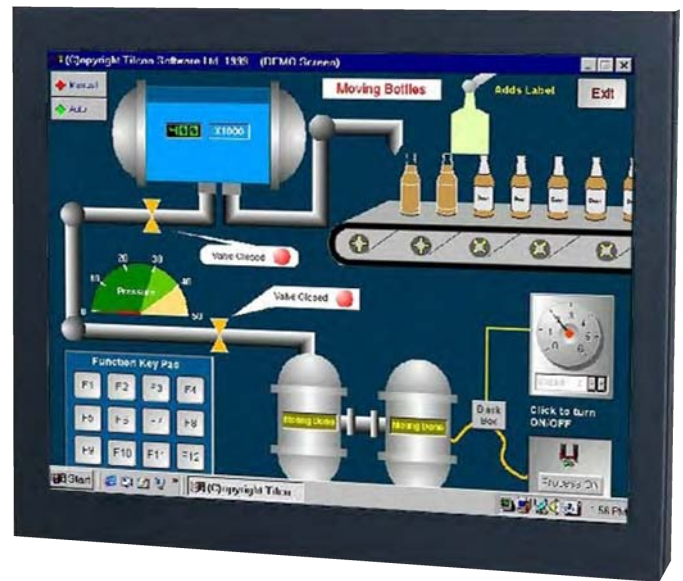
SLOW SCAN LCD MONITORS

The 29LM261A51UN series of 26" LCD monitors has been designed primarily for Slow Scan Legacy Systems as replacements for 28" CRT monitors. They utilise modern WXGA TFT panels and a KME designed Analog-Digital interface board. All elements, including a toughened glass protection screen, have been packaged in a rugged metal housing. The AC power supply is integrated in the monitor head.

Public Information and Process Control systems may be able to use the full width of this 16:9 screen. If 4:3 aspect ratio information is displayed the picture will be the same size as on a 21.3" LCD monitor. High brightness and exceptional viewing angles make this 26" a unique solution to many CRT Replacement problems. Some common Slow Scan Signal timings are factory pre-set. New ones may be added on request. Other signals, which are close to those listed (see table below), will give a display but some adjustment may be necessary for full screen performance.

SOLUTIONS FOR SLOW SCAN MONITORS

- > Specially designed for Legacy CRT replacement
- > Widescreen (16:9) formats up to WXGA resolution
- > TTL, Analog & Interlaced Signals accepted
- > BNC, 9-D & 15-D Connectors
- > Rugged Metal Construction with Good Stability



H. kHz	V. Hz	Pixels	H. kHz	V. Hz	Pixels
15.625	50	714 * 288	15.63	50	560 * 275
15.63	60	808 * 238	15.72	60	564 * 240
15.72	60	508 * 240	15.72	60	604 * 240
15.72	60	640 * 200	16.10	50	564 * 304
16.276	70	640 * 220	16.79	70	577 * 215
17.85	50	508 * 338	21.83	60	640 * 350
20.65	50	640 * 384	24.78	60	640 * 384



26" CRT REPLACEMENT LCD MONI- TOR HEAD

29LM261A51UN

DATASHEET

Electrical Description		Mechanical Description	
TFT Characteristics:		Dimensions: Monitor (approx):	636 x 383 x 111mm
			Weight: 15Kg (approx)
Type:	AM Colour TFT	Input:	9D, 15D, BNC x 5
Max Resolution:	1366 x 768 pixels	Housing	Painted aluminium
Active Display Area:	575.7 x 323.7 mm	User Controls:	Rear Mounted
No. Colours:	16 million	On Screen buttons	Brightness, Contrast, Auto setup Disable, H/V Position, Clock, Clock Phase and Priority
Contrast Ratio:	800:1 typical		
Brightness:	500cd/m ² typical		
Viewing Angles (at CR>10):	170 ° H, 170 ° V		
Backlight Life:	50,000 hours typical		
Sync. Type/Level:	Separate H&V (+/-ve) TTL or Composite (-ve) TTL or Sync-on-Green (-ve) 0.3V		
Signal Sync:	Analog RGB 0.7-1.0Vp-p OR TTL RGB>2.75Vp-p		
Synchronisation Range:			
Horizontal scan:	15-91kHz		
Vertical scan:	40-80Hz		
Multiscan Support:	1366 x 768 WXGA 1280 x 1024 SXGA 1024 x 768 XGA 800 x 600 SVGA 640 x 480 VGA		
Slow Scan Support: (see table examples on previous page)	Pre-programmed Analog or TTL inputs in 15-40kHz range		
Power Supply:	90-260V AC 50/60Hz		
Power Consumption:	90W Max	Part Numbers:	
Environmental:		Desktop Model:	29LM261A51UN
Storage Temp:	-20 to 60°C		
Operating Temp:	0 to 50°C		

Due to a policy of continuous product development KME reserves the right to change specifications and descriptions without prior notification. All trademarks acknowledged.

26" CRT REPLACEMENT LCD MONITOR HEAD

DATASHEET

29LM261A51UN

