

ReBOX 100

Intel® Pentium® M / Celeron® M Fan-less System
with 1 x PCI Expansion Slot



Main Features

- ◆ Support Intel® Pentium® M/Celeron® M Processor
- ◆ Intel® 910GML Chipsets
- ◆ One 1000/100/10Mbps LAN port
- ◆ 4 x USB2.0/VGA/LVDS/Audio
- ◆ 2 x RS232/422/485 and 12 x RS232 via 3 x DB44 connector
- ◆ On-board DC to DC power design to support 24V DC power input
- ◆ Support ATX power mode and PXE
- ◆ One PCI Expansion

Product Overview

NEXCOM's modularized design ReBOX 100 includes ETX form factor PC Box fan-less computer, industrial grade ReBOX EX1 with up to 12 USB (6 with power) and 6 serial ports (RS232), and the 180-Watt tough ReBOX PW1 power supply that renders 8 amps of electrical current at 24 VDC. The ReBOX EX1 provides rich device connection flexibilities to boost your POS applications while the Power Box provides reliable 24 VDC power to ensure smooth operations. All modularized components are designed to enhance POS/Kiosk application, which require various device connections and quick I/O expansion, such as receipt printers (counter, bar, kitchen), barcode scanner, magnetic strip reader, fingerprint reader, and cash drawers to meet all your Retail/POS applications in the vertical market.

The modularized and upgradeable design not only provides excellent peripheral connection flexibility but also offers convenient options to change CPU, HDD, Memory, I/O interface and power capacity. In addition, the modularized design also reduces the expense of maintenance and upgrade for lower Total Cost of Ownership.

Specifications

Main Board

- ◆ Supports optional Intel® Pentium® M processor in 478-pin, Micro-FCPGA package from 1.6 to 1.8 GHz with 1MB/2MB L2 cache
- ◆ Supports optional Intel® Celeron® M processor in 478-pin, Micro-FCPGA package from 1.3 to 1.5GHz with 512KB/1MB L2 cache
- ◆ Supports 400MHz FSB CPUs only
- ◆ Intel® 852GM and ICH4 chipsets

Main Memory

- ◆ 1 x 200 pin SO-DIMM socket for up to 1G Non-ECC, Non-Registered DDR SDRAM memory

Expansion

- ◆ Supports 1 x 32-bit/33-MHz PCI card (170 mm/L max)

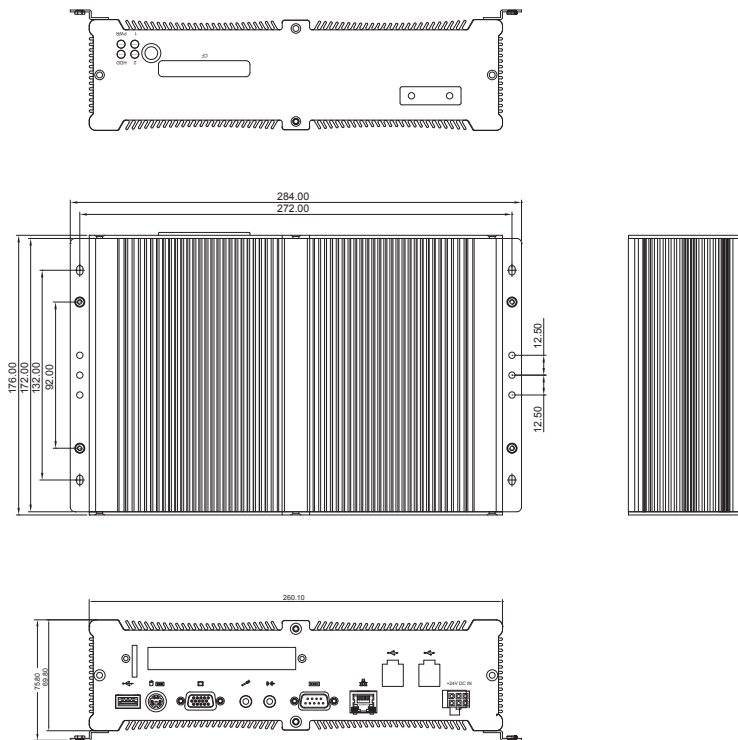
I/O Interface – Front

- ◆ Power/HDD status LEDs
- ◆ 2 LEDs, connected to GPIO and programmable for alarm or other application-specific purposes
- ◆ 1 x CF socket
- ◆ 1 x AT Power on/off switch

I/O Interface – Rear

- ◆ 1 x USB 2.0 port
- ◆ 1 x KB/Mouse connector
- ◆ 1 x DB15 VGA port
- ◆ 1 x Audio-out and 1 x Mic-in
- ◆ 1 x DB9 COM port (RS232/422/485)
- ◆ 1 x 10/100 LAN port
- ◆ 2 x 24V Powered USB (5A/port max)
- ◆ 1 x 24V DC in

Dimension Drawing



Device

- 1 x CF card socket
- 1 x 2.5" HDD drive bay

Power Requirements

- 1 x External 180W AC adapter (optional)
- Power Input: 100 – 240V AC, 50/60 Hz
- Power Output: 24V DC

Dimensions

- 260mm (W) x 176 mm (D) x 70mm (H)

Operation System

- Windows XP, XPe, Linux Red Hat

Environment

- Operating temperature:
Ambient with Airflow
5 ~ 40°C (w/ HDD)
-10 ~ 50°C (w/ CF card only)
- Tcase (Surface Temperature of Chassis):
5 ~ 45°C (w/ HDD)
-10 ~ 50°C (w/ CF card only)
- Storage temperature: -20 ~ 80°C
- Relative humidity: 10% to 90% (Non-condensing)

Certificates

- CE approval
- FCC

Ordering Information

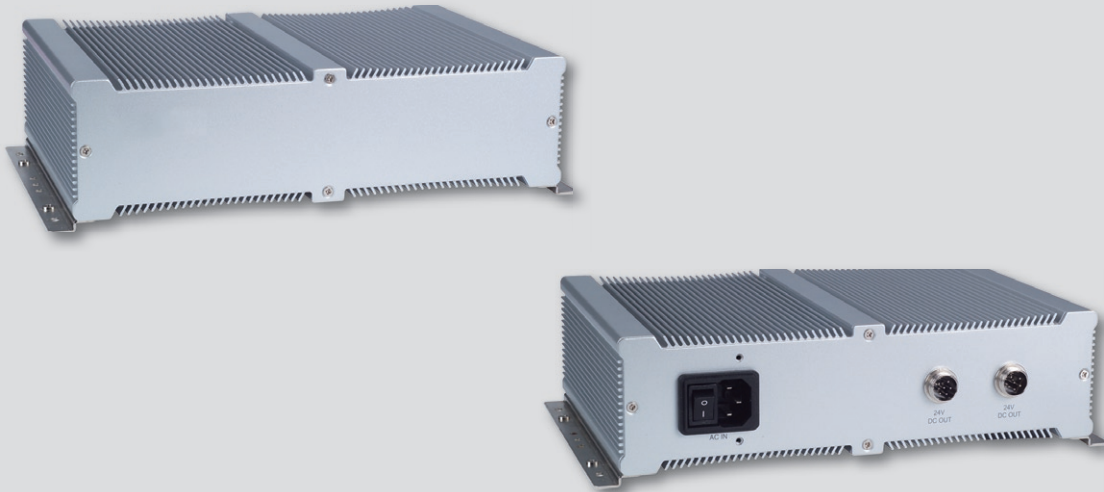
• Barebone

ReBOX 100 (P/N:10A00010000X0)

Support Intel® Pentium® M/Celeron® M Fan-less Bare-Bone System
1 x PCI Expansion

Optional

- Power adapter(24V) 180W for ReBOX 100 (P/N:7400180001X00)



Main Features

- ♦ Fan-less Power Supply
- ♦ 180W AC/DC Power Supply
- ♦ 2 x 24V DC Output

Product Overview

NEXCOM's modularized design Smart Box includes ETX form factor PC Box fan-less computer, industrial grade I/O BOX with up to 12 USB (6 with power) and 6 serial ports (RS232), and the 180-Watt tough Power Box power supply that renders 8 amps of electrical current at 24 VDC. The I/O Box provides rich device connection flexibilities to boost your POS applications while the Power Box provides reliable 24 VDC power to ensure smooth operations. All modularized components are designed to enhance POS/Kiosk application, which require various device connections and quick I/O expansion, such as receipt printers (counter, bar, kitchen), barcode scanner, magnetic strip reader, fingerprint reader, and cash drawers to meet all your Retail/POS applications in the vertical market.

The modularized and upgradeable design not only provides excellent peripheral connection flexibility but also offers convenient options to change CPU, HDD, Memory, I/O interface and power capacity. In addition, the modularized design also reduces the expense of maintenance and upgrade -- for lower Total Cost of Ownership.

Specifications

I/O Interface – Rear

- ♦ 1 x AC in power connector
- ♦ 2 x 6-pin 24V DC Output

Input Specifications

- ♦ Rated Input Voltage: 120Vac – 240Vac (Nominal)
- ♦ Input Voltage Range: 90Vac to 265Vac
- ♦ Input Frequency Range: 47Hz to 63Hz
- ♦ Input Current:
 - 100Vac, 4.0A max. (full load)
 - 240Vac, 2.0A max. (full load)

General Specifications

- ♦ Efficiency: \geq 85% 240Vac input
- ♦ Efficiency: \geq 80% 100Vac input
- ♦ MTBF: 50,000 hours, continuous operation at 25°C

Output Specifications

- ♦ Output Voltage: 24V 8A (6.5A/Typical, 7.7A/Max)
- ♦ Output Voltage Setting: 24V +/- 5% (22.8V ~ 25.2V)

Dimensions

- ♦ 260mm (W) x 176 mm (D) x 70mm (H)

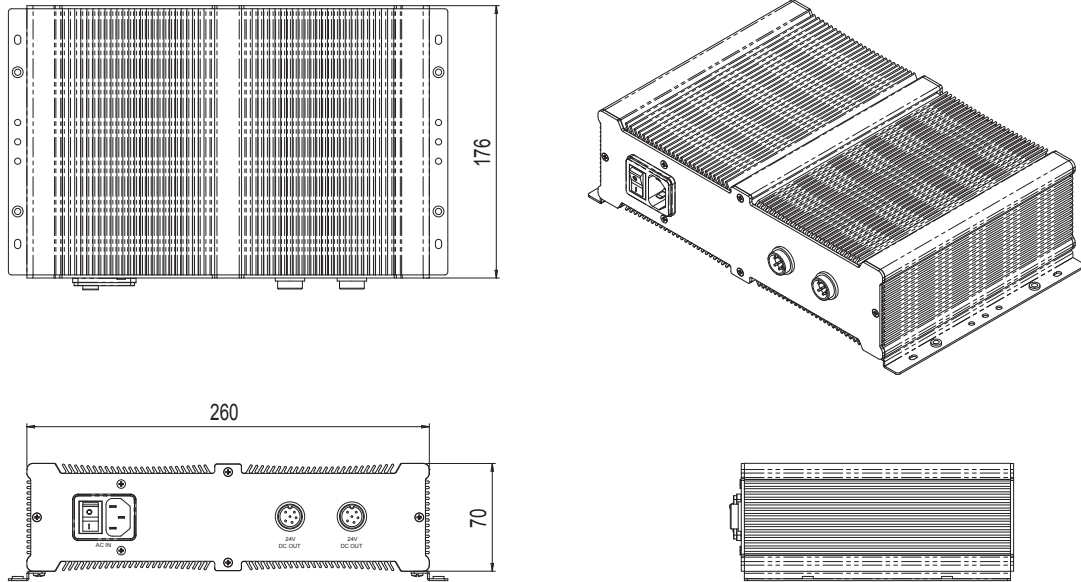
Environment

- ♦ Operating Temperature: 0 – 40°C (Ambient with Airflow)
- ♦ Storage Temperature: -20 – 80°C
- ♦ Operating Relative Humidity: 20% to 80% (Non-Condensing)
- ♦ Storage Relative Humidity: 10% to 90% (Non-Condensing)

Certificates

- ♦ CE approval
- ♦ FCC

Dimension Drawing



Ordering Information

- **ReBOX PW1 (P/N:10A000PW100X0)**
2 x 24V DC output, 180W AC/DC Fan-less Power Supply

ReBOX EX1

Fan-less I/O BOX with 6 x Powered USB, 6 x USB
and 6 x RS232 Ports



Main Features

- 2 x 24V Powered USB
- 2 x 12V Powered USB
- 2 x 5V Powered USB
- 6 x USB Port
- 6 x Serial Port (2 x 24V, 2 x 12V, 2 x 5V)
- Supports 24V DC output x 2 for Peripherals
- Supports 24V Powered-USB Power Input or 24V DC-in Power Input
- Optional 180W Power BOX

Product Overview

NEXCOM's modularized design Smart Box includes ETX form factor PC Box fan-less computer, industrial grade I/O BOX with up to 12 USB (6 with power) and 6 serial ports (RS232), and the 180-Watt tough Power Box power supply that renders 8 amps of electrical current at 24 VDC. The I/O Box provides rich device connection flexibilities to boost your POS applications while the Power Box provides reliable 24 VDC power to ensure smooth operations. All modularized components are designed to enhance POS/Kiosk application, which require various device connections and quick I/O expansion, such as receipt printers (counter, bar, kitchen), barcode scanner, magnetic strip reader, fingerprint reader, and cash drawers to meet all your Retail/POS applications in the vertical market.

The modularized and upgradeable design not only provides excellent peripheral connection flexibility but also offers convenient options to change CPU, HDD, Memory, I/O interface and power capacity. In addition, the modularized design also reduces the expense of maintenance and upgrade -- for lower Total Cost of Ownership.

Specifications

I/O Interface – Front

- 2 x 3-pin 24V DC Output (each 1.8A max)
- 2 x 24V Powered USB (each 2A max)
- 2 x 12V Powered USB (each 3A max)
- 2 x 5V Powered USB (each 4A max)
- 6 x USB 2.0 Port

Note: Power output current depends on the total watt of power input.

I/O Interface – Rear

- 6 x COM Port
COM1 & COM2: Pin9 can be selected to be 5V, 2A Max.
COM3 & COM4: Pin9 can be selected to be 12V, 2A Max.
COM5 & COM6: Pin9 can be selected to be 24V, 2A Max.
- 2 x 24V Powered USB Port
- 1 x 6-pin 24V, 6A DC-in

Note: Power output current depends on the total watt of power input.

Power Requirements

- 1 x External 180W AC Adapter (optional)
Power Input: 100 – 240V AC, 50/60 Hz
Power Output: 24V DC
- 1 x External 180W 24V DC Power Box (optional)
- 2 x External 24V Powered USB Cable (optional)

Note: System power source is either from the two 24V Powered USB ports or from 6-pin 24V DC-in.

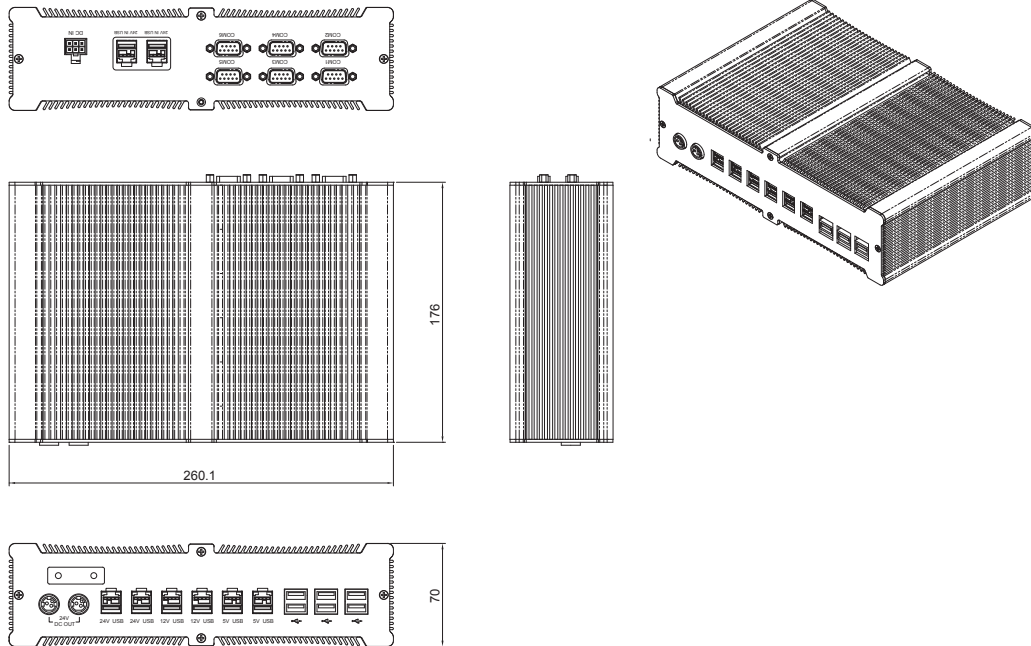
Operation System

- Windows XP, XPe, Linux Red Hat

Dimensions

- 260mm (W) x 176 mm (D) x 70mm (H)

Dimension Drawing



Environment

- Operating Temperature: 0 ~ 40°C (Ambient with Airflow)
- Storage Temperature: -20 ~ 80°C
- Relative Humidity: 10% to 90% (Non-Condensing)

Certificates

- CE approval
- FCC

Ordering Information

- **ReBOX EX1 (P/N:10A000EX100X0)**
6 x Powered USB, 6 x RS232, 6 x USB2.0 and 2 x 24V DC output