

# SNAP Serial Communication Modules

## Features

- ▶ SNAP-SCM-232: Two RS-232 serial ports with optional RTS/CTS flow control
- ▶ SNAP-SCM-485-422: Two RS-485 2-wire serial ports or one RS-485/422 4-wire serial port
- ▶ Individually isolated ports
- ▶ Baud rates to 115 K Baud
- ▶ Connection accessories provided
- ▶ Works with the SNAP PAC System
- ▶ Up to eight serial modules per rack
- ▶ 30-month warranty

## Description

The SNAP-SCM-232 and SNAP-SCM-485-422 serial communication modules are part of the SNAP PAC System. They conveniently provide two channels of serial data at a remote Ethernet location.

Many applications require digital, analog, and serial data to provide a complete solution. Traditionally, either separate serial network cabling is required for the serial devices, or an expensive data processor or PC must be used just to interface with the serial devices.

SNAP serial communication modules eliminate this problem by providing two channels of high-speed, isolated serial communications packaged in the compact SNAP module form.

- The **SNAP-SCM-232** interfaces to auxiliary serial equipment via two RJ-45 plug-in data connectors, providing two RS-232 serial ports. The module also supports optional RTS/CTS flow control.
- The **SNAP-SCM-485-422** uses the standard SNAP removable top-mounted connector for easy wiring of two 2-wire RS-485 ports or one 4-wire RS-485/422 port. The module has convenient top switches for termination and bias.

LED indicators are provided on each module to indicate Transmit and Receive on each port.

Both SNAP serial communication modules work with SNAP PAC Ethernet-based brains and rack-mounted controllers, both standard wired models and Wired+Wireless™ models. (They do not work with serial-based SNAP PAC brains.) These modules snap into Opto 22 SNAP PAC mounting racks right beside digital and analog



SNAP Serial Communication Modules

modules, to provide the mix of analog, digital, and serial channels you need at any location.

Typical applications include interfacing with printers, scales, chart recorders, and barcode systems. Using the SNAP-SCM-232 or SNAP-SCM-485-422 as a converter, these non-Ethernet devices can be connected to an Ethernet network and be available for control, monitoring, or data acquisition by any authorized PC or other device on the network.

With the SNAP-SCM-232, a short (12-inch), unshielded twisted-pair cable and both male and female RJ-45 to DB-9 adapters are included for easy connection to all types of RS-232 devices.

SNAP racks use a retention rail locking system that holds modules securely to the rack. Normally, a hold-down screw is not required. However, for applications that require additional module security, each module has provisions for two 4-40 by 1/2-inch standard machine screws to hold each module in position on the SNAP rack.

For details on using these modules, see Opto 22 form #1191, the *SNAP Serial Communication Module User's Guide*.

**Notes for legacy hardware:** These SNAP serial communication modules can also be used with SNAP Simple, SNAP Ethernet, and SNAP Ultimate brains on an M-series or B-series rack. SNAP-SCM-232 modules offering RTS/CTS flow control were manufactured in June 2003 or more recently and require I/O processor firmware version 5.0 or newer. The SNAP-SCM-485-422 also requires firmware 5.0 or newer. An older module part number, SNAP-SCM-485, supported 2-wire RS-485 only.

## Part Numbers

Part	Description
SNAP-SCM-232	Two-channel RS-232 serial communication module
SNAP-SCM-485-422	Two-channel RS-485 (two-wire) or single-channel RS-485/422 (four-wire) serial communication module

# SNAP Serial Communication Modules

## Specifications

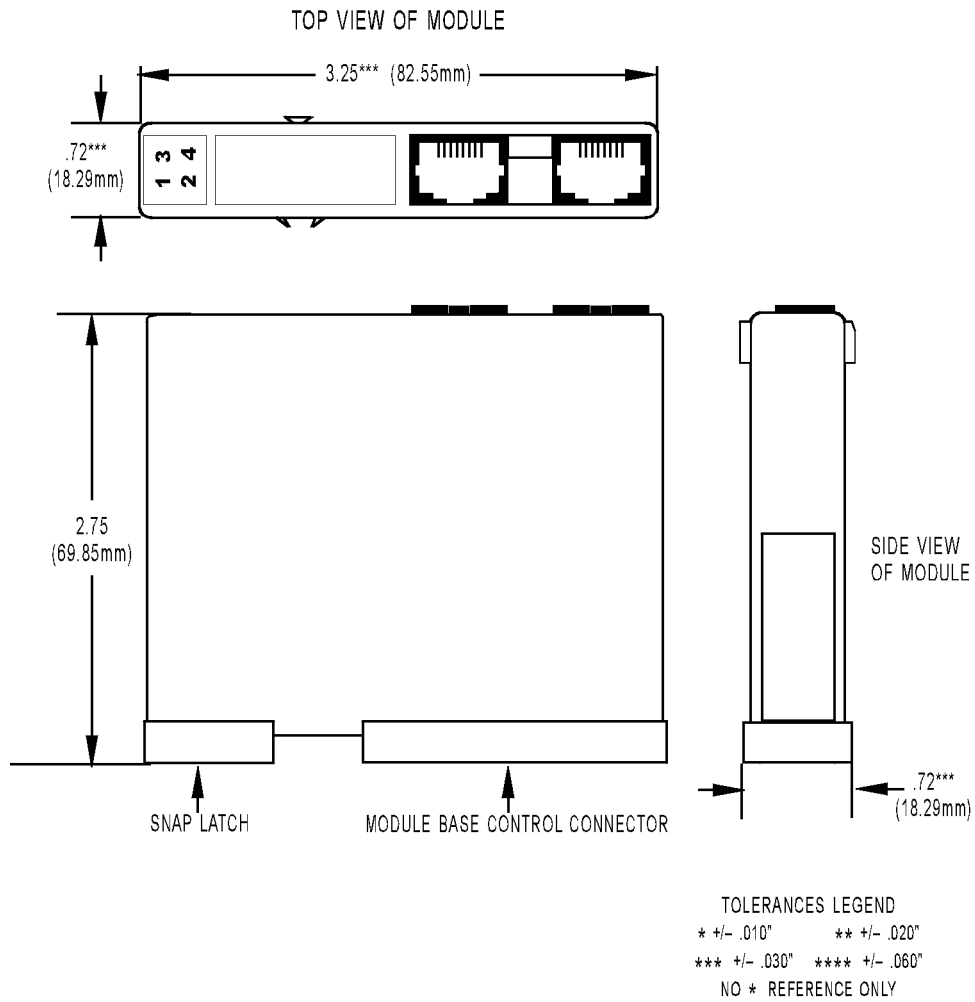
Baud rates	300–115,200
Channel-to-channel isolation	750 V <sub>RMS</sub>
Logic supply voltage	5.0 VDC
Logic supply current	250 mA DC
Number of ports per module	2 (1 on SNAP-SCM-485-422 in 4-wire mode)
Max. number of modules per rack	8
Maximum cable length, point-to-point (SNAP-SCM-232)	50 feet
Maximum cable length, multidrop (SNAP-SCM-485-422)	1,000 feet at 115,200 Kbd
Operating temperature	0 to 70 °C
Storage temperature	-30 to 85 °C

LED	Indicates
1	TX port A
2	TX port B
3	RX port A
4	RX port

# SNAP Serial Communication Modules

## Dimensions

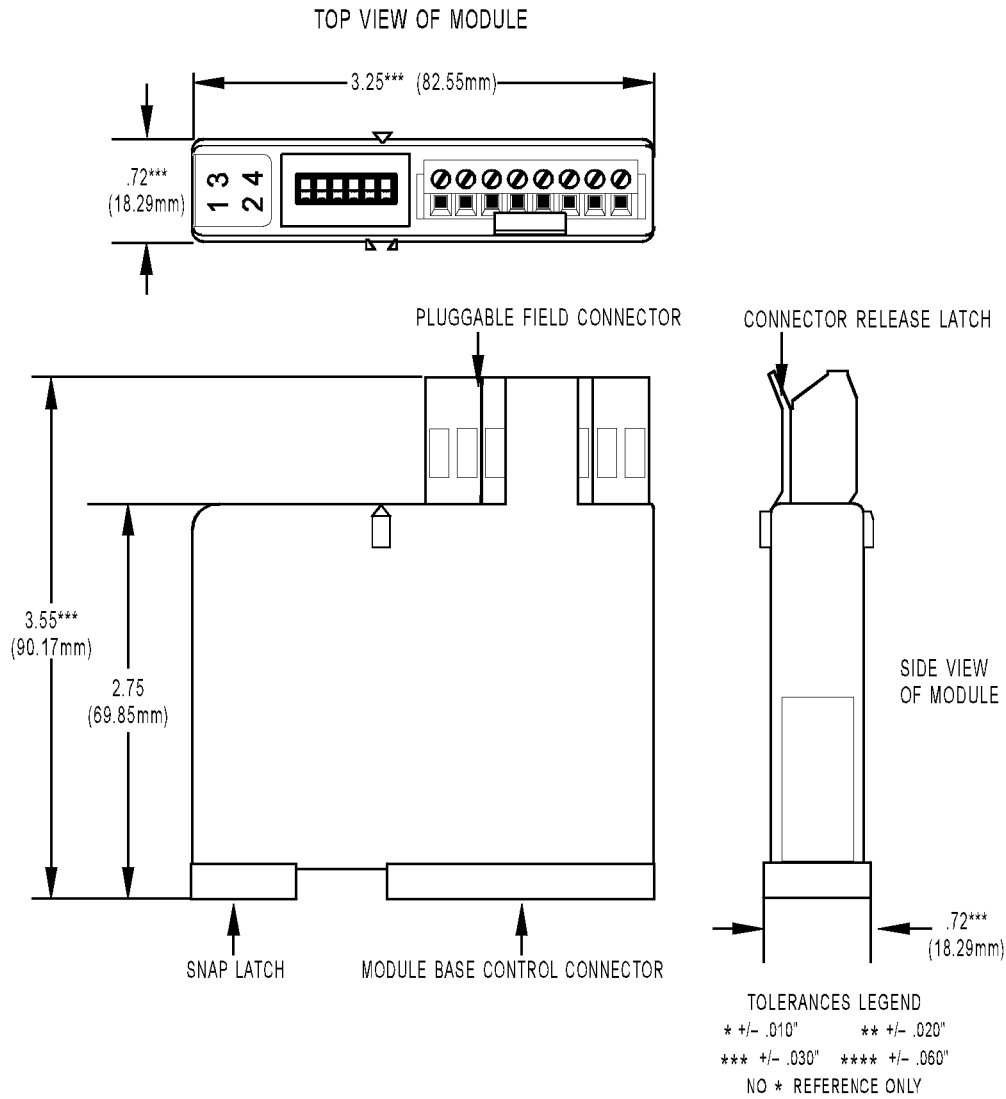
### SNAP-SCM-232 Serial Communication Module



# SNAP Serial Communication Modules

## Dimensions

### SNAP-SCM-485-422 Serial Communication Module



# More About Opto 22

## Products

Opto 22 develops and manufactures reliable, flexible, easy-to-use hardware and software products for industrial automation, remote monitoring, and data acquisition applications.

### SNAP PAC System

Designed to simplify the typically complex process of understanding, selecting, buying, and applying an automation system, the SNAP PAC System consists of four integrated components:

- SNAP PAC controllers
- PAC Project™ Software Suite
- SNAP PAC brains
- SNAP I/O™

### SNAP PAC Controllers

Programmable automation controllers (PACs) are multifunctional, multidomain, modular controllers based on open standards and providing an integrated development environment.

Opto 22 has been manufacturing PACs for many years. The latest models include the standalone SNAP PAC S-series and the rack-mounted SNAP PAC R-series. Both handle a wide range of digital, analog, and serial functions and are equally suited to data collection, remote monitoring, process control, and discrete and hybrid manufacturing.

SNAP PACs are based on open Ethernet and Internet Protocol (IP) standards, so you can build or extend a system without the expense and limitations of proprietary networks and protocols.

### PAC Project Software Suite

Opto 22's PAC Project Software Suite provides full-featured and cost-effective control programming, HMI (human machine interface) development and runtime, OPC server, and database connectivity software to power your SNAP PAC System.

These fully integrated software applications share a single tagname database, so the data points you configure in PAC Control™ are immediately available for use in PAC Display™, OptoOPCServer™, and OptoDataLink™. Commands are in plain English; variables and I/O point names are fully descriptive.

PAC Project Basic offers control and HMI tools and is free for download on our website, [www.opto22.com](http://www.opto22.com). PAC Project Professional, available for separate purchase, adds OptoOPCServer, OptoDataLink, options for Ethernet link redundancy or segmented networking, and support for legacy Opto 22 serial *mistic*™ I/O units.

### SNAP PAC Brains

While SNAP PAC controllers provide central control and data distribution, SNAP PAC brains provide distributed intelligence for I/O processing and communications. Brains offer analog, digital, and serial functions, including thermocouple linearization; PID loop control; and optional high-speed digital counting (up to 20 kHz), quadrature counting, TPO, and pulse generation and measurement.

### SNAP I/O

I/O provides the local connection to sensors and equipment. Opto 22 SNAP I/O offers 1 to 32 points of reliable I/O per module, depending on the type of module and your needs. Analog, digital, serial, and special-purpose modules are all mixed on the same mounting rack and controlled by the same processor (SNAP PAC brain or rack-mounted controller).

## Quality

Founded in 1974 and with over 85 million devices sold, Opto 22 has established a worldwide reputation for high-quality products. All are made in the U.S.A. at our manufacturing facility in Temecula, California. Because we do no statistical testing and each part is tested twice before leaving our factory, we can guarantee most solid-state relays and optically isolated I/O modules for life.

## Free Product Support

Opto 22's Product Support Group offers free, comprehensive technical support for Opto 22 products. Our staff of support engineers represents decades of training and experience. Product support is available in English and Spanish, by phone or email, Monday through Friday, 7 a.m. to 5 p.m. PST.

## Free Customer Training

Hands-on training classes for the SNAP PAC System are offered at our headquarters in Temecula, California. Each student has his or her own learning station; classes are limited to nine students. Registration for the free training class is on a first-come, first-served basis. See our website, [www.opto22.com](http://www.opto22.com), for more information or email [training@opto22.com](mailto:training@opto22.com).

## Purchasing Opto 22 Products

Opto 22 products are sold directly and through a worldwide network of distributors, partners, and system integrators. For more information, contact Opto 22 headquarters at 800-321-6786 or 951-695-3000, or visit our website at [www.opto22.com](http://www.opto22.com).

[www.opto22.com](http://www.opto22.com)